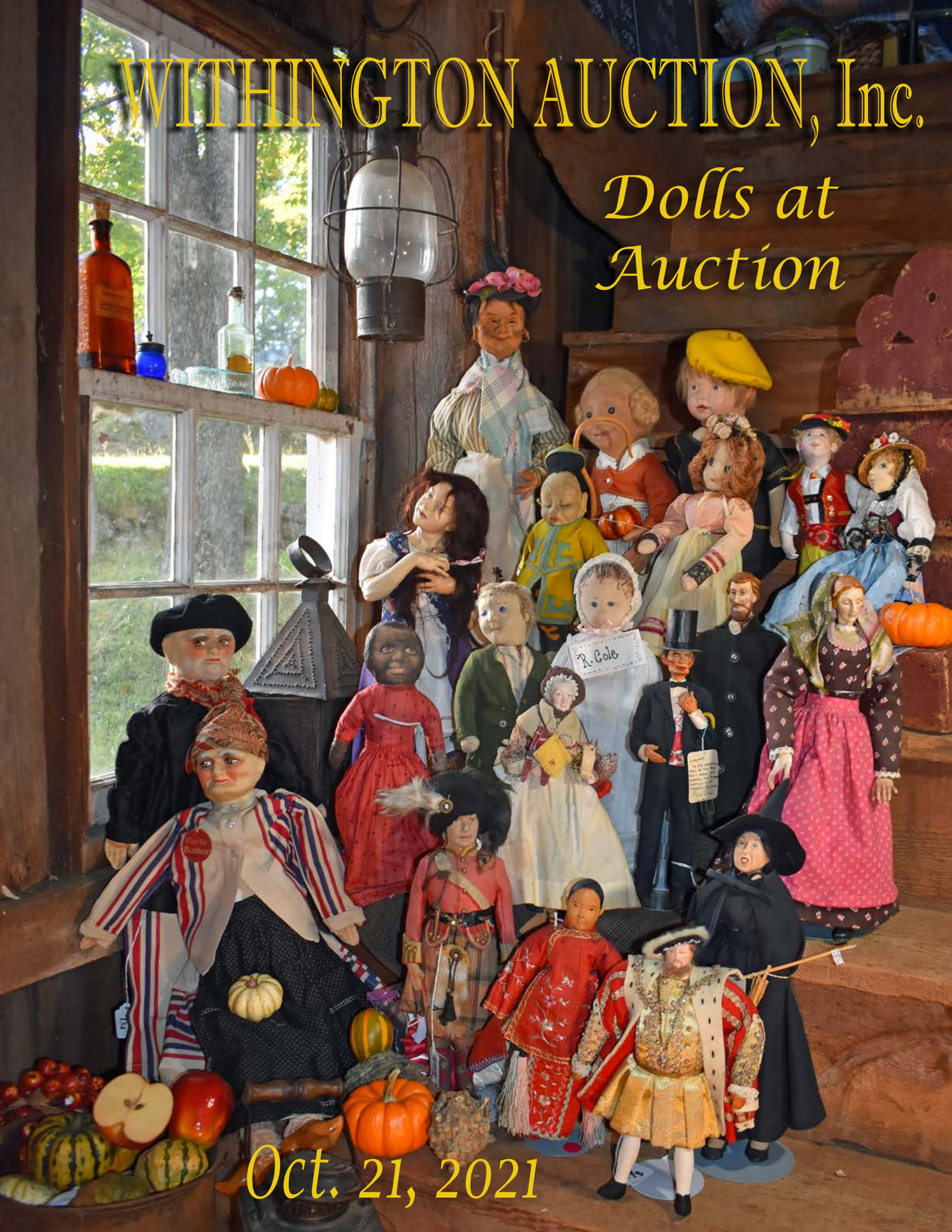


WITHINGTON AUCTION, Inc.

Dolls at Auction



Oct. 21, 2021



WITHINGTON AUCTION, Inc.

Dolls at Auction - October 21, 2021

AUCTION SALE # 2583_

Thursday - October 21, 2021 - One very FULL Day 500 + lots of Dolls!!
AUCTION STARTS - 10:00 AM
 Double Tree by Hilton - Nashua, NH

PREVIEWS

October 20 - Evening: 7 - 9pm
October 21 - Morning: 8 - 10am

DOLL SHOW & SALE

October 20 - 1 - 6 pm or by Chance...OPEN TO THE PUBLIC!
 8th Floor Hotel Rooms - ROOM SELLING - Space is Limited
 Call for Reservations - Doubletree 603-886-1200
BUY * SELL * TRADE - Social Networking - Dolls Meet 'N Greet

HOTEL INFO

New Location! Double Tree by Hilton, 2 Somerset Parkway, Nashua, NH
 Exit 8 off Rt. 3 (ASK FOR THE DOLL RATE)
 (Note: Holiday Inn was sold in September to a car dealership and was demolished)

WEB-Site

Full Color Catalogue - \$15.
 (View Cat on-line & MORE PHOTOS) - www.withingtonauction.com

ABSENTEE Bidding

ABSENTEE & TELEPHONE BIDDING ACCEPTED - NO INTERNET !
BIDDING FORMS AVAILABLE ON OUR WEB-SITE www.withingtonauction.com
 For Info: Tel: (603)- 478-3232 / FAX: (603)- 478-3233

TERMS

RETURNS: All items MUST be inspected and returned within 10 minutes of purchase - **if not as described in catalogue**. and be of \$ 100.00 valuation or more to qualify for a refund - Due to the sufficient time allowed for inspecting the dolls, The following items are sold **AS-IS:** All bodies are sold AS-IS; . All Paper Dolls, Artist Dolls, Madame Alexander Dolls and Box lots. Speckling and wear are normal conditions for Bisque and China dolls, therefore it will be up to the buyer to inspect for these conditions. Items designated AS-IS are FINAL SALES.

17% Buyer's Premium - Discounted to 14% for Cash or Check
Visa & Mastercard accepted - No NH Sales Tax

STAFF

Larry Leizure *President, Photographer, Appraiser, Consultant - NHPA Member*
Marcia Leizure *NH Auctioneer's Lic. #4028, Events, Trucker, Writer...*
Dolores Smith *(RIP) Doll Specialist, Master Chef, Angel ... We miss you everyday!*
Bob Bouchard *Buildings & Grounds / Assistant Doll Specialist, Quality Control.*
Barbara Scully *Auctioneer II, Councilor: DAA (Doll Addicts Anonymous)*
Dick Withington *(RIP) 3/31/1918 - April 29, 2008 - NH Auctioneer's License #1*

CONSIGNING Your Collection

Thinking about Selling your Doll Collection? Withington's can help..
 Call or E-Mail photos and / or inventory for a free verbal appraisal.

CONTACT
603-478-3232
FAX: 478-3233

WITHINGTON AUCTION, INC.
Selling Dolls at Auction since 1959
 17 Atwood Road Hillsborough, NH 03244
 E-mail: withington@conknet.com - WEB: www.withingtonauction.com

GREETINGS October 2021 FROM THE DOLLHOUSE... WITHINGTON AUCTION, Inc. - Hillsborough, NH

Rabbits!! The first of every month, one should greet the day with an emphatic “Rabbits” and get out of bed backwards ... to assure that the next 30 days will be full of good luck and happy times! I’m not sure of the origin of the custom, but old Dick Withington would meet you, on the first of the month with the Rabbits routine, so pleased that he beat everyone else to the punch line. We try to carry on the tradition, ... but oftentimes the omission was due to our not knowing what day it was... or even if that the month had changed! Today is the 1st of October, and, in our opinion, begins the best of time of year in New England. Historically, we also have celebrated the end of the season with the final doll auction and year-end party. This year, unlike any other in Withington history, is full of drama and uncertainty for many reasons. Since the onset of Covid back in 2020, our country has been plagued with the fears of the pandemic and the restrictions on both travel and group gatherings. With the availability of vaccines to prevent and protect people from sickness, feeling secure in traveling to other locations is once again part of life. Accordingly, Withingtons has not had a live auction at a hotel since Fall of 2019. There have been several “Timed Absentee Auctions” that have helped to sustain us in these uncertain times. During the Covid crisis, this type of auction has presented an opportunity to buy dolls when assembling in large groups was not an option. The on-line auctions attract an audience from all over the country and there is always a demand for the Best Dolls!

During the summer, the reincarnated DOLL AND TOY EXTRAVAGANZA was held under the tents at Withington’s doll house and was a rousing success. Combined with the quality non-pictured dolls and meaty box lots, the opportunity to acquire quality dolls and doll related goods, fresh out of private collection, was too good to pass up. And the enthusiastic crowd bid with wild abandon. Attendance was better than expected and the crowd clearly felt secure in the outdoor venue and among the gathering of doll friends, content to be together again! Most wanted to know when the next tent auction would be.

Because Covid cases have been declining and over 50% of the NH population has been inoculated, we decided it was time to hold the final auction of the season, LIVE, at the Nashua Hotel. With collections in house the catalog nearly ready for press, we received a call from the Holiday Inn management, informing us that the Nashua property had been sold and the building was scheduled for demolition... for a new Porche dealership! Who would have imagined, after 33 years of auctions at this facility... we would have to find another home for the dolls! Announcing: the new location for Withington Doll Auctions is: Double Tree by Hilton in Nashua, NH – 2 Somerset Parkway at Exit 8, Nashua. We have negotiated with the Doubletree by Hilton, trying to as closely replicate the old venue - but time will tell. After signing the 12-page contract and trying to make the Hilton management understand.... The Doll ladies are not “normal” guests! We have grown accustomed to having a degree of control at our doll events.... we are cautiously optimistic about our new digs and time will tell.

What would have been the season’s end... now, is more like the beginning of a whole new chapter in the Withington history. Many of you may still remember the old New Hampshire Highway Hotel in Concord, Withington’s home from 1960’s through 1988. Our tenure there met with a similar fate when the aging facility was scheduled for urban renewal, later becoming the future LL Bean, Hannaford’s and Pizza Uno center. Life happens when you’re making other plans, for sure

Included in the October auction are dolls from across New England, and finally got an old collection we waited two years for the family to decide what to do with mother’s dolls. Dolls brought to us from Connecticut included a Portrait Jumeau, in original box that was purchased from the Centennial Exhibition... sometimes it’s just like Christmas. Our travels this summer have included a final visit to central Pennsylvania. The old gal, well into her 90’s had passed in the winter, and we returned to gather up the last of her favorite things. A lover of artist dolls, there were exceptional Martha Thompsons, characters of all sorts, along with French fashions, dollhouse dolls and miniatures and boxes full of tiny treasures galore. Our final journey this summer brought us to Mississippi, to pick up the collection representing decades as a member of the Long Island Doll clubs. After retirement, the couple decided to return to their roots in “Ol Miss” and built a cozy brick home where the livin’ is easy. The only problem was.... There were no doll clubs in the area and you really need doll friends to spark the passion... so it was time to pass on this decades old collection on to the next generation. “Quality through Diversity” and that pretty much sums up the collection – from Lenci to door of Hope... ribbon-winning Barbies to a rare “Diver Dan Doll”. The very long road trip was a chance to spend a week with my daughter, Melissa, who did most of the driving (thank God). In this business, one must take advantage of the opportunity to find fun wherever it appears. Our homeward route was through Memphis and we spent a few hours at Grace-land (it was on both of our bucket lists). And oh, Elvis HAS left the building... bur it remains suspended in time waiting for his return.

The October auction will feature the remarkable dolls of Iva Marie Rideout, nationally-known authority on Springfield Dolls, she was writing the book on Joel Ellis, Martin patent, & Mason & Taylor... A diverse mix of quality dolls, both rare and noteworthy: Fashions; Philadelphia, Rollinson, Chase, Moravian, Roxanna Cole, Steiff, Alabama, Kamkins, early woodens, Milliner’s models, Tuck comb, French Papier Mache, Rubber, Fortune Teller and more. Joel Ellis (Springfield Dolls) Mason & Taylor, Wizards....and many examples of Artist dolls of all types. A dozen Dorothy Heizer dolls: Royals, Jefferson, Blue Boy, and children in signed Heizer Boxes. Artist Dolls: Dewees Cochran, RJ Wright. Dolls w/ Trunks & Wardrobes: Rhomer, Kestner “Nita”+ steamer trunk full, Convention Dolls, all bisque, Carl Horn, Half dolls; all represent a lifetime of Collecting, Research; as president of Doll Study Club of Boston and Doll Collectors of America, Ivamarie Rideout was a quiet force in the doll world – The Doll World will never be the same without her.

From the journal of Steiff expert and blogger, Rebecca Kaufman, ... sharing her thoughts on Ivamarie Rideout and how important she was to so many doll collectors...

“Ivamarie Rideout is the reason I am a member of DSCB and UFDC, two organizations that are so important to me now. I was invited to give a program at the 2012 annual event in Washington, DC. I knew nobody at the convention and was not familiar with UFDC or aware of DSCB. I wandered around the event alone for days. After reviewing the schedule, I realized Boston was part of Region 15, and they were having a meeting at the convention I arrived a few minutes before the gathering started and stood outside the doorway. Ivamarie came up to me, took me by the hand, and asked me my name. I responded, and told her I was from Cambridge, Mass, and could I sit in on the meeting to learn more about doll happenings in the Boson area. Then she did something remarkable that I will never forget. She looked me it the eye, agreed I could attend and then she said, “don’t worry, I will always take care of you.” And from that moment on, in just about all aspects of my life, she did. How did she know? I was a total stranger. But just for a moment in her eyes.”

The doll sisterhood is both strong and magical. I had a similar experience at my first convention with the late – great Jean Grout.... Enthusiastically showing our group the “Highlights” of the convention... with a captive audience ready to absorb everything happening in the doll wonderland that is the National Convention! Over the years, I found amazing, the amount of strength and stamina required to make it through those very early mornings into late nights... and how those *eighty-somethings* were transformed into little girls playing with dolls with their girlfriends.

I was one of the fortunate ones to experience Ivamarie’s UFDC program on “Joel Ellis – Early American Doll & Toy Entrepreneur” Springfield, VT. Many of the dolls, so very uncommon, rarely turn up on the auction block. We are pleased to present the dolls of Ivamarie Rideout to the world.... Enjoy!



Sincerely, Marcia & Larry Leizure

*Have a Happy and Healthy Holiday Season...
May All Your Doll Dreams Come True!*

October 21, 2021
WITHINGTON AUCTION, Inc.
17 Atwood Road - Hillsborough, NH 03244

Marcia Leizure - NH Lic. # 4028
withington@conknet.com

* 603-478-3232 *

Larry Leizure, President
www.withingtonauction.com

October 21, 2021 - Picture Dolls

- 01 21 ½" S&H 719 DEP**, brown glass eyes, OM with teeth, PE, brown mohair wig, straight wrist compo body (lower legs repaint, arms/hands touched up) red/gold dress
- 02 24" SFBJ PARIS 11**, blue glass sleep eyes, OM with teeth, PE, blonde mohair wig, BJCB, white dress
- 03 21" DEP 10**, brown glass sleep eyes, OM with teeth, PE, blonde mohair wig, BJCB, white dress, (right PE nick, nose rub, few facial dark specs)
- 04 17" 260 DEP GERMANY**, blue glass eyes, OM with teeth, blonde mohair wig, PE, red velvet dress, gusseted kid body with bisque arms (broken left thumb), (excessive wig glue)
- 05 21" LENCI FELT DOLL**, painted features, signed felt body, blonde mohair wig, pink polka dot dress (faded), (felt is soiled in areas)
- 06 21" RED STAMP DEPOSE TETE JUMEAU**, brown glass eyes, PE, CM, blonde mohair wig, French compo body with Made in France sticker & blue stamp Jumeau body (left upper thigh has a crack in compo & left lower leg has a crack in compo, scratches & nicks to compo), original Jumeau box, original red dress (melting), note on box "This doll was shown in the French exhibit at the World's Fair in Chicago in 1893. Was bought by my father at the close of the exhibit and given to me when I was seven years old, Mary Barker Lynn", (left PE nick, right eye tiny in making spot in iris)
- 07 2 - BISQUE DOLLS, 18" X 8 KESTNER** shoulder head, brown glass eyes, OM with teeth, PE, blonde mohair wig, gusseted kid body, cloth feet, bisque hands, early outfit & 16 ½" Kestner 152, brown glass sleep eyes, OM with teeth, blonde mohair wig, BJCB, white dress, (missing little finger right hand)
- 08 R.J. WRIGHT "SNOW WHITE & THE SEVEN DWARFS, 16"** Snow White Princess 1536/2500 painted features, MIB, Happy 554/2500 MIB, Dopey 2289/3500 MIB (top of box has stains), Sleepy 1567/2500 MIB, Doc 102/2500 MIB, Bashful 1560/2500 MIB, Sneezy 102/2500 MIB, Grumpy 1568/2500 MIB
- 09 16" R. J. WRIGHT SNOW WHITE "RAGS"** 342/1000, painted features, MIB
- 10 17" R.J. WRIGHT "THE MARCH HARE"** from Alice in Wonderland #155, MIB, also in the box is a 3" R.J. Wright Teddy Bear
- 11 15" R. J. WRIGHT "MISSISSIPPI BEAR HUNT"** MIB, featuring *Teddy Roosevelt* carrying a little brown bear & wooden rifle, 52/500, MIB
- 12 17" R. J. WRIGHT, LITTLE CHILDREN SERIES 1, "Hannah"**, painted features, felt doll, 72/250, MIB, (top cover corner tears)
- 13 16" R. J. WRIGHT, BABES IN TOYLAND, "Rosemary"**, painted features, felt doll, 33/50, MIB
- 14 16" R. J. WRIGHT, BABES IN TOYLAND, "Timothy"**, painted features, felt doll, 33/50, MIB
- 15 3 - 10 ½" LIBERTY OF LONDON KING DOLLS**, Henry the 8th, & 2 - Henry the 3rd's, appropriate costumes, stitched & painted features
- 16 8 - 9" LIBERTY OF LONDON MAN DOLLS, MR. PICKWICK**, Charles Dickens, King Edward VII, 2 - Life Guards, Lord Horatio Nelson, Charles II of Spain, & Admiral Horatio Nelson, appropriate costumes, stitched & painted features



001



002



003



004



005



006



007



008



009



010



011



012



013



014



015



016



017



018



019



020



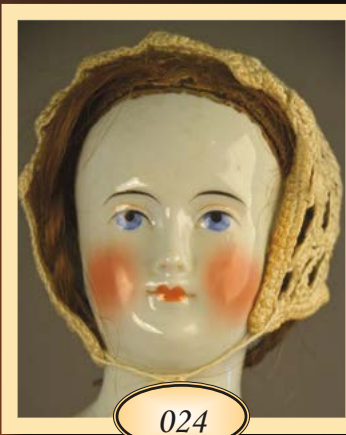
021



022



023



024



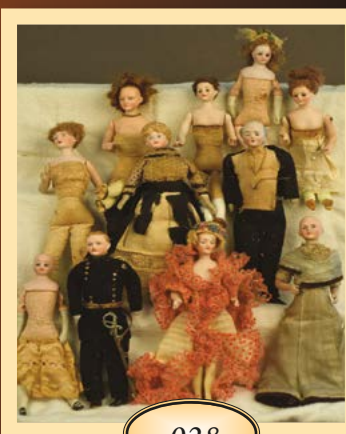
025



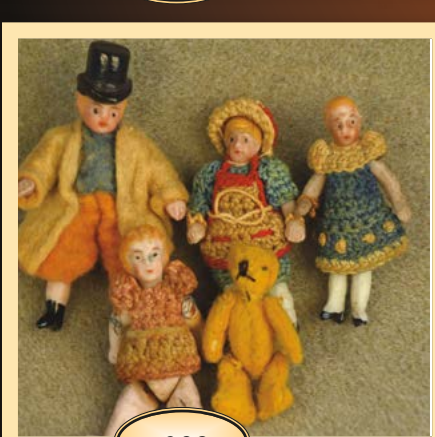
026



027



028



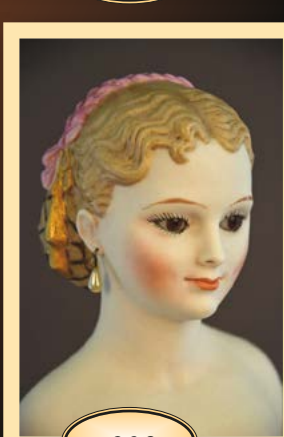
029



030



031



032

17 19" ROBERT NEUENSCHWANDER "ANGELICA" GIRL DOLL, 1992, doll, carved wood head & limbs, leather body, inc. identification marks on back of shoulder plate, head turned to left, enameled glass eyes, C/M, black mohair wig, dressed in orig. linen & cotton dress

18 5 - 9 1/2" LIBERTY OF LONDON DOLLS, Queen Elizabeth II, Philip Duke of Edinburgh, 2 - Lord John's, & Queen Elizabeth wife of George VI, all in appropriate dress, in original box (wear)

19 12 1/2" L WIND UP MUSICAL AUTOMATON with 2 - 9" bisque head dolls, AM 390 & Heubach Koppelsdorf 250, dolls arms move along with dolls turning left & right, mohair wigs, blue glass eyes, early outfits (melting), on raised wood platform

20 17" MARTHA THOMPSON "AMY" shoulder head doll, blonde sculpted hair with black ribbon & flower, blue glass eyes, PE, CM, cloth body, porcelain arms & legs, green dress

21 2 - 14" MARTHA THOMPSON PORCELAIN S/H, HEAD DOLLS, green dress dated '56 brown ringlet hair, painted features, cloth body, porcelain limbs, white dress dated '54, blonde sculpted hair w/ flowers, painted features cloth body, porcelain limbs

22 14" MARTHA THOMPSON SHOULDER HEAD PORCELAIN DOLL, elaborate hat w/ floral decoration, painted features, cloth body, porcelain limbs, stripe dress with green bodice

23 3 - ELSE LUDECKE CLOTH DOLLS WEST GERMANY, 12" candle seller, painted features, with wood rack holding candles for sale, floral outfit, 14" Chimney Sweep painted features, dressed in his work clothes & top hat, & 14" Russian lady, painted features, early outfit, all marked Isle on bases, center seamed faces

24 21" BIEDERMEIER CHINA, PAINTED FEATURES, brown mohair braided wig, kid body (worn), china hands, white dress, fur muff

25 2 - ARTIST DOLLS, 18" MARTHA THOMPSON PRINCESS GRACE porcelain doll, painted features, cloth body w/ porcelain limbs, blonde sculpted bun hair, PE, long white lace wedding dress (stains at bottom), & 19 1/2" PRINCE RAINIER, painted features, marked Murray T (Martha's son) on shoulder plate, cloth body, porcelain limbs, formal dress blues

26 4 - ANILI DOLLS MIB, 15" 1986 UFDC SOUVENIR DOLL KATE, 16" Liz Fidraia pink & black outfit, 14" no name blue outfit, & 23" Midinette, pink outfit, all felt dolls by Lenci, painted features, wear to one box lid

27 4 - LENCI DOLLS MIB, 14" FRAGOLA 187/499 strawberry, 13" Pino 485/499, 13" Fiora Rosa 236/499, & 13" Farfalla 474/499, cloth dolls with painted features

28 LOT OF 10 - 7" BISQUE SHOULDER HEAD DOLL HOUSE DOLLS, painted features, clothed & unclothed, some mohair wigs, (1 broken shoulder plate)

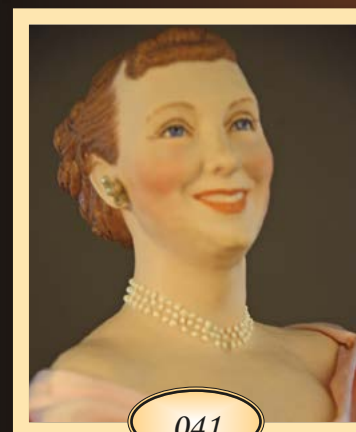
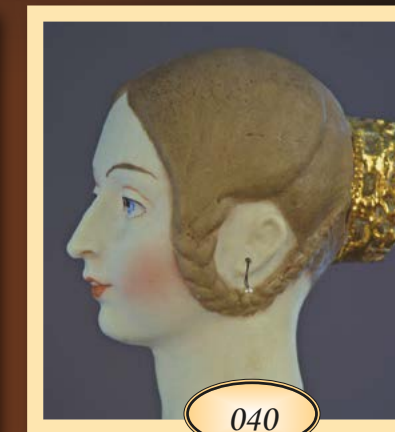
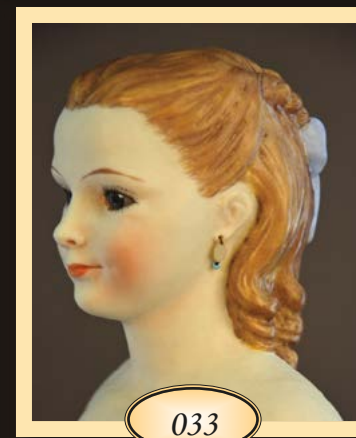
29 LOT OF 5 ALL BISQUE MINI DOLLS/BEAR 1" - 1 3/4", 3-CARL HORN DOLLS in knitted outfits, 1-tiny mohair teddy bear, 1 - gent. in top hat & felt outfit (1 leg unstitched),

30 LOT OF 15 WIGS, VARIOUS SIZES & colors, mohair & human hair

31 18" MARTHA THOMPSON "JO MARCH" 52 MDT, blue glass eyes, PE, CM, brown sculpted bun with blue ribbon, cloth body stamped Martha D Thompson, porcelain limbs, no clothes, Little Woman Series

32 17" MARTHA THOMPSON "MEG" 52 MDT, brown glass eyes, PE, CM, blonde sculpted hair with pink & gold weave, black net, cloth body stamped Martha D Thompson, porcelain limbs, no clothes, Little Woman Series

- 33 17" MARTHA THOMPSON "BETH" 52 MDT**, blue glass eyes, PE, CM, brown sculpted ringlet hair with blue ribbon, cloth body stamped Martha D Thompson, with porcelain limbs, no clothes, (in firing tiny pock mark top of left shoulder), Little Woman Series
- 34 LOT OF 4 EARLY WAX DOLLS 17" – 19"** with various condition problems, bad splits, body problems, & 9 pcs of early doll clothing
- 35 2 – 12" MARTHA THOMPSON PORCELAIN S/H, DOLLS:**, Prince Albert- painted features, brown sculpted hair w/ sideburns, cloth body, porcelain limbs, & Queen Victoria- painted features, blonde hair w/ bun, PE, jewel necklace & bracelet, cloth body, porcelain limbs, (no clothing)
- 36 LOT OF 2 MARTHA THOMPSON PORCELAIN DOLLS**, 13" lady, painted features, blonde sculpted hair with floral hat & ribbons, cloth body with porcelain limbs (stains) white bloomers, no clothes, & 10 3/4" lady, painted features, brown sculpted hair with black ribbons, kid body with porcelain limbs, no clothes, shoulder plates marked MDT
- 37 LOT 4 LENCI FELT DOLLS ALL MIB:** 19" "Jolanda" 483/499 blue outfit, 12" "Boschette" 206/499 MIB. green outfit, 13" "Prince" 290/499 red/blue vest, & 13 1/2" "Grace" 335/499 red stripe skirt
- 38 20" MARTHA THOMPSON "PRINCESS MARGARET"** porcelain S/H, doll, painted features, PE, brown sculpted hair, pearl necklace, cloth body w/porcelain limbs, violet & red dress
- 39 21" MARTHA THOMPSON PORCELAIN S/H LADY DOLL**, 1960, blue glass eyes, blonde sculpted hair, cloth w/ porcelain limbs, pink stockings & shoes, in the Gibson Girl style
- 40 18 1/2" MARTHA THOMPSON PORCELAIN S/H**, lady doll '54, painted features, brown braids w/ bun, gold decoration, PE, marked cloth body, limbs, green/blue slippers, no clothes
- 41 2 – 18" MARTHA THOMPSON PORCELAIN S/H DOLLS '56**, Pres. Eisenhower & wife Mamie, painted features, Ike with short wispy hair, cloth body, porcelain limbs, black shoes & formal blk. Tux & Mamie has brown sculpted hair, PE, pearls, pink heels & gloves, pink formal dress
- 42 18" PAINT DECORATED 2 WHEEL PULL CART RED INTERIOR**, yellow & natural exterior with red pin stripes & 11" skin covered brown horse pull toy on metal wheels
- 43 20" OVAL WALNUT DEEP FRAME SHADOW BOX**, with 8" wax doll surrounded by fiber floral decorations, (small spot of frame damage), *WILL NOT SHIP*
- 44 12" X 14" VICTORIAN WALNUT FRAME OVAL OIL ON CANVAS** picture of young girl in red dress, (paint infill various areas), tiny pinhead hole bottom of portrait
- 45 3 – 16" SASHA DOLLS MIB MADE IN ENGLAND**, 1 – Blonde 5-103 Gregor, 1 – Girl in bib overalls, 1 – Tammy? In sweater & plaid quilt, all in original round tubes
- 46 4 – 16" SASHA DOLLS**, 3 – MIB, 1 – no box but mint, 1 – Gregor in denim, 1 – Gingham dark hair, 1- blonde girl in blue corduroy, & 1 – Black "Cora" in sweater & red skirt (no container), round tubes
- 47 2 – 13" MARTHA THOMPSON PORCELAIN SHOULDER HEAD DOLLS**, "Betsy & her brother", glass inset eyes, sculpted brown hair, cloth bodies with porcelain limbs, red check dress & white sailor outfit (soiled)
- 48 2 – 13" BERNARD RAVCA STOCKINETTE DOLLS**, the fisherman & knitting wife, stitched & painted features, cloth bodies, Ravca round labels, appropriate clothes, wood clogs





049



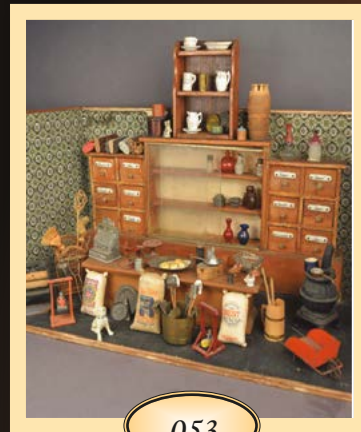
050



051



052



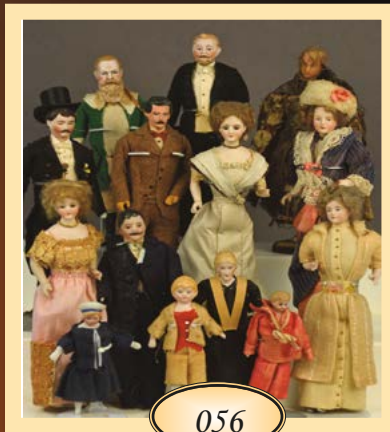
053



054



055



056



057



058



059



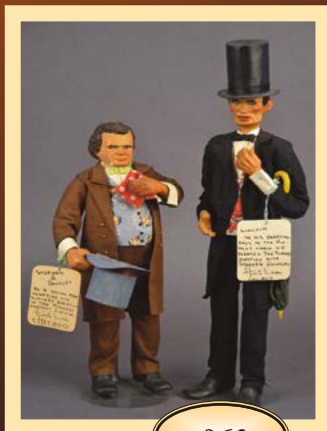
060



061



062



063



064

49 2 – 11” ARTIST DOLLS, THE PEDDLER LADY & APPLE LADY, bisque heads, cloth body, bisque limbs, painted features with large molded hats, peddler lady with a basket of wares, apple lady seated in chair with basket of apples

50 LOT OF 6 EARLY PEG WOODEN DOLLS 3” – 5”, 3” Paper mache head , molded hair, painted features, peg wooden body jointed at knees & elbows, 4” peg wooden painted features, jointed shoulders, elbows, & knees, early dress, 4 ½” tuck comb, peg wood jointed body, painted features

51 LOT OF 6 – 9” – 10” LIBERTY OF LONDON DOLLS, Queen Elizabeth I, Queen Mary, King George VI, Sir Walter Raleigh, Speaker of the House of Commons & Archbishop of Canterbury, periods outfits with Liberty of London labels

52 LOT OF 6 – 9” – 10” LIBERTY OF LONDON DOLLS, Beefeater Guard, Lord High Chancellor, King George VI, Anne of Cleves, Archbishop of Canterbury, & William I, period outfits with Liberty of London labels

53 32” L MINIATURE COUNTRY STORE ROOM BOX with all accessories
Doll House Dolls Sold As Is

54 14 DOLL HOUSE DOLLS 3” – 7” bisque heads, 2 – with glass eyes, remainder have painted features, various eras of clothing

55 16 DOLL HOUSE DOLLS 4” – 6” , bisque heads, painted features, various eras of clothing

56 14 – DOLL HOUSE DOLLS 4” – 7”, 1 – wax head, remainder bisque heads, 2 – glass eyes, remainder painted features, various eras of clothing

57 20 – DOLL HOUSE DOLLS 2 ½” – 6” painted features, various materials, & various era clothing

58 BOX LOT OF DOLL MINIATURES, tin items, furniture, corsets, & accessories

59 18” ARTIST SANTA BY MARIA STOLZ ON SNOWSHOES, with canoe on his back, & many other presents, No. 235 limited edition, face crafted from clay, with certificate

60 LOT OF 4 MODERN LENCI DOLLS MIB – 17” “Pinocchio” in red felt shorts 355/499, 17” “Sailor Baby Marco” blue sailor suit, 477/499, 17” “Caxmen” floral dress 307/499, & 17” “Baby Marlene” red outfit 301/499

61 2 – ILSE DOLLS WEST GERMANY, painted features 14 ½” Swiss boy “Heimi” dressed in native Swiss outfit, & 14” Swiss woman dressed in native Swiss outfit

62 2 – OVAL GLASS DOMES WITH WAX DOLLS & floral decorations on footed bases, 7” & 15”, smaller dome has single figure, larger dome has 3 figures and a sheep. (WILL NOT SHIP)

63 2 – AVIS LEE’S LITTLE PEOPLE ARTIST DOLLS, 13” Abe Lincoln, & 10 ½” Stephen A. Douglas, carved wood, painted features, period dress

64 3 – AVIS LEE’S LITTLE PEOPLE ARTIST DOLLS, 8 ½” sea captain, 10” Tiny Tim, & 11” lady (broken finger left hand), carved wood, painted features, period dress

65 2 – 15” CARVED WOOD ARTIST DOLLS MAN & WOMAN, painted features, delicate carved features, jointed wood body, period outfits ?

66 12”W x 11”T x 9” D-FRONT DOOR ROOM BOX with “Louis David Madame Recamier” artist doll “reclined” on sofa, glass sides, sm. oriental rug (WILL NOT SHIP)

67 11” L x 15 ½”T x 8” D ROOM BOX w/ LIGHTED CHANDELIER, 2 miniature artist dolls by Marty Saunders, period dress, & asst. miniature Chippendale furniture in, paneled wall back door (missing one hinge, 2 angled side mirrors, 2 – loose by panels)

68 2 – FAWN ZELLER ARTIST DOLLS “JANETTE”, 13 ½” UFDC 1991 convention doll, painted features, in original Box (stains) & 8 ½” painted features, green stripe dress

69 9 ½” ROBERT NEUENSCHWANDER artist doll 2000, carved wood, painted features, blonde hair, blue/white dress

70 LOT OF 8 – LIBERTY OF LONDON DOLLS 6 ½” – 9 ½”, Old Queen Victoria, King John, King Edward VII, 5 – unmarked, (stains & melting to outfits, foot damage)

71 LOT OF 8 – LIBERTY OF LONDON DOLLS 6” – 10”, Young Princess Elizabeth, Lady Alice,, Queen Mary, George VI, Queen Elizabeth I, Queen Elizabeth, Archbishop, 1 – unmarked (some slight soiling)

72 LOT OF 2 – 20” BLUE BOX LENCI “BOBBY” felt doll, dressed as baseball player with bat, (some wear to box), & 12” felt lady doll, painted features, center face seam in ethnic outfit

73 13” MARTHA THOMPSON ARTIST DOLL “CATHERINE” 1959?, porcelain shoulder head. painted features,, very elaborate hairstyle & hat, jewel necklace, fur & jewel trim flowing purple gown (in manufacture flaw base of should head center left back)

74 FRAMED 12 ½” x 15 ½” LANCASTER PA FRAKTUR watercolor & litho with angels, birds, flowers, (folds, stains, tape marks)

75 FRAMED 13” x 15 ½” FRAKTUR WATERCOLOR & litho with angels, birds, eagle (stains)

76 PAIR OF FRAMED 10 ½” x 13 ½” OIL ON CANVAS of man & women, man at desk with quill pen signed lower right corner “aout 1835” on front & “bonnet pink 1835” on back of canvas, (edge staining, some crackalure), woman in period outfit with folded hands, (area of rubs, needs cleaning), gold leaf frames (as is)

77 18” LIFT TOP TRUNK PACKED FULL of vintage doll clothing

78 10 ½” SIMON & HALBIG 1079, BROWN GLASS SLEEP EYES, OM with teeth, blonde mohair wig, PE, BJCB (replaced), tan/floral dress

79 12 ½” JUMEAU 3, BROWN GLASS EYES (tiny corner flecks), PE (nicks), CM, blonde mohair wig (excess wig glue), marked Jumeau body (neck damage & some re-paint), it appears body is one size larger than head, early red dress (melting)

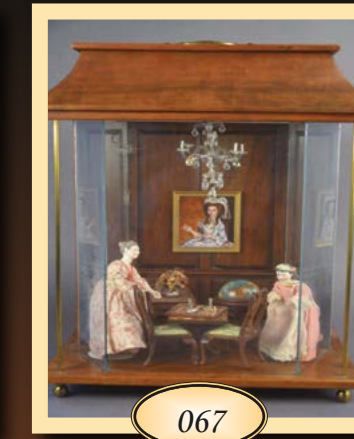
80 15 ½” BISQUE SHOULDER HEAD BOY 160-5, blue glass eyes, molded hat & bodice. O/CM, cloth body with kid arms, sailor boy blue suit, one shoe



065



066



067



068



069



070



071



072



073



074



075



076



077



078



079



080



081



082



083



084



085



086



087



088



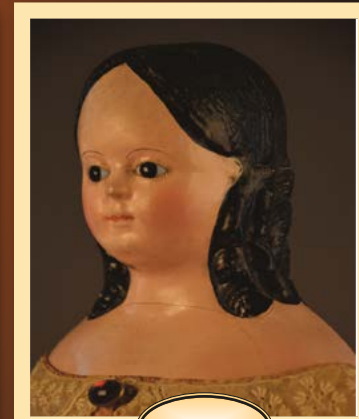
089



090



091



092



093



094



095



096

81 11" FRENCH FASHION SHOULDER HEAD 2/0, painted blue eyes, CM, blonde mohair wig, kid body, tan/blue trim silk dress

82 10" SIE C 3 STEINER, BLUE GLASS EYES, CM, PE, blonde mohair skin wig, Au Nain Bleu labeled compo body, off white dress, (repairs to bisque head)

83 15 1/2" KESTNER AT 9, brown glass eyes, CM, blonde mohair wig, straight wrist compo body (touchups, legs need stringing), silk dress

84 16 1/2" CHINA SHOULDER HEAD, painted features, black center part curly hair (touchups), CM, cloth body with china limbs (right leg cracks), early silk outfit

85 16 1/2" CHINA SHOULDER HEAD ROHMER, blue glass eyes, blonde mohair wig, CM, kid body with oval blue stamp (BREVETTE SGDG ?), china arms, brown/red dress, red leather boots marked JJ

86 8" ALL BISQUE PARIAN HEAD, painted features, blonde center part with curls, CM, off white/red dress

87 13" BELTON TYPE S/H, BLUE GLASS EYES, CM, blonde mohair skin wig, kid body, bisque arms, white outfit, (left eye corner fleck, repairs & lines to right shoulder)

88 18" JUMEAU 8, BLUE GLASS EYES, CM, blonde mohair wig, PE, compo body w/ blue stamp Jumeau, (replaced rt. arm ball), white dress, (long hairline top of forehead)

89 13" JUMEAU 5, BLUE GLASS EYES, CM, blonde mohair wig, PE (right ear lobe repair, left ear nick), Blue stamp Jumeau body (arms repainted), white dress, blue trim

90 11 1/2" S&H 939 DOME HEAD, blue glass eyes, CM, PE, blonde mohair wig, straight wrist compo body, tan dress, (large repair to back of head/neck)

91 11 1/2" K*R 192, BROWN GLASS EYES, OM with teeth (2 missing), PE, blonde mohair wig, straight wrist compo body (hand wear), tan dress

92 20" BLACK HAIR PAPER MACHE SHOULDER HEAD, brown glass pupiless eyes, CM, long pipe curls, cloth body with leather arms, early outfit, 1st & 2nd place ribbon, (lines & repair to shoulder plate)

93 12 1/2" FRENCH FASHION S/H, E1 DEPOSE B, Eugene Barrois, blue glass eyes, CM, blonde mohair wig, kid body with bisque arms (4 broken finger right hand), CC marked boots, floral dress, (in manufacture line right ear), (wig glued down)

94 15 1/2" FRENCH FASHION S/H, INC. E 1 B, Eugene Barrio, blue glass eyes, CM, PE, blonde mohair wig, clothw/ leather arms, yellow/red dress, (pock mark above right eye)

95 12" FRENCH FASHION SWIVEL NECK S/H, INC. E 0 B, Eugene Barrio, blue glass eyes, CM, blonde mohair wig, kid body, white/blue dress, (manufacture flaw by right nostril)

96 13" WOOD/GESSO TUCK COMB, painted features, PE, wood mortise & tenon peg body (chip at shoulder plate), painted arms & legs, early silk dress, (chip in gesso at forehead)

97 23" CHASE, MOLDED STOCKINETTE FACE, painted features, (blue eyes), Chase label on body, white dress

98 16" R. JOHN WRIGHT NURSERY RHYME SERIES, "Tom, Tom, the Piper's son, Oct. 28, 2003, 49/100, felt doll, dressed in felt costume, painted features, holding a piglet in left hand, original box and COA, mint condition

99 16" R. JOHN WRIGHT "LISA" from the Little Children's series, felt doll, painted features, beautifully dresses in a gray flannel pleated skirt, with hand-knitted Nordic sweater with silver buttons, holding a white cat in right hand, #238, original box & tag, mint condition

Iva Marie Rideout Doll Collection

Lot #100 through #192

100 14" CLOTH W/ SWIVEL HEAD BING DOLL, pressed & painted features, seamed head, rosy cheeks, cloth body w/ moveable arms & legs, stitched fingers, dressed in black lederhosen, (missing left shoe), circa 20's, This is a large bodied early Bing for Kathe Kruse type

101 PAIR OF CLOTH SWIVEL HEAD BING BOY dolls 10" & 11 1/2", pressed and painted features, seamed heads, rosy cheeks, pressed cloth bodies with moveable arms & legs, stitched fingers, 10" boy dressed in black pants & purple shirt, 11 1/2" boy missing right knit shoe, circa 1920's

102 18 1/2" KAMKINS SWIVEL NECK, pressed & painted features, blonde mohair wig, pressed cloth body, white/orange dress, brown sandals, (minor facial rubs)

103 PAIR OF 11" LENCI GIRLS, pressed felt heads, painted features, felt bodies with moveable legs, one dressed in blue felt with original Lenci tag, other shear dress with felt flowers (faded clothes & light soil)

104 18" MORAVIAN CLOTH POLLY HECKEWELDER, all cloth, painted features, stitch jointed fingers with separate thumbs, blue check clothing with white apron with lace edging, knitted hat with blue ribbon to match dress color, probably the 1940's 50's version

105 19 1/2" CHASE MOLDED STOCKINETTE HEAD, painted features, blonde stroked hair, cloth body, stitched fingers, blue dress, (wear to head & body)

106 16" CHASE MOLDED STOCKINETTE HEAD, painted features, blonde stroked hair, cloth body, stitched fingers, blue dress, (nose rub, cracks to hair area)

107 20" PHILADELPHIA CLOTH DOLL, painted features, brown wispy hair, cloth body, rosy cheeks, stitched fingers, blue check outfit, (facial & hair rubs)

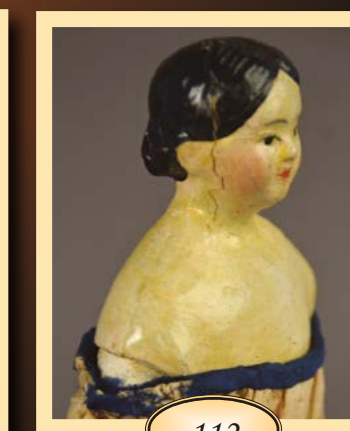
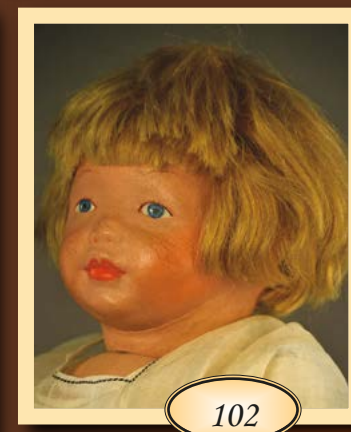
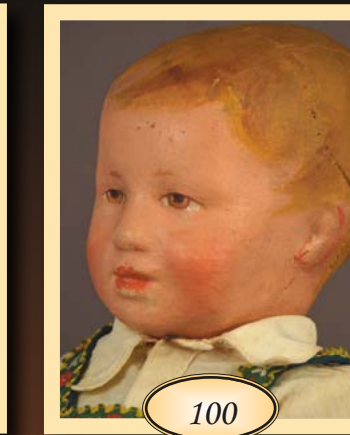
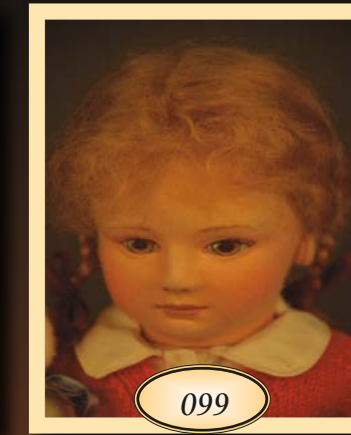
108 16" CHASE MOLDED STOCKINETTE HEAD, painted features, blonde stroked hair, cloth body, stitched fingers, blue/white outfit, (nose rub, cracks to hair area & paint loss)

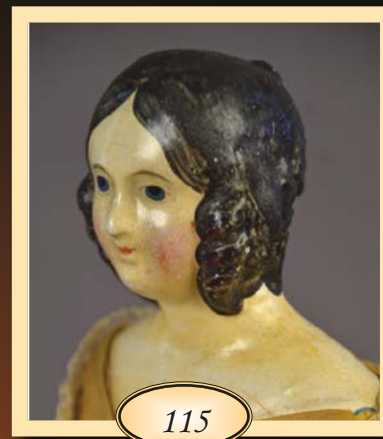
109 6 1/2" PAPER MACHE HALF DOLL MOUNTED ON ROUND STONE BASE, molded & painted features & hair, wood body, kid arms, red skirt, provenance Richard Wright Collection

110 11" x 12" FRAMED 3 1/4" DEEP SHADOW BOX with 6 3/4" paper mache milliners model, painted features, wood limbs, early white dress

111 11 3/4" PAPER MACHE SHOULDER HEAD DOLL, painted features, black center part curly hair, kid body, wood arms & legs, early outfit (lines & chip to paper mache)

112 9" PAPER MACHE SHOULDER HEAD, painted features, black painted center part hair, kid body with wood arms & legs, early dress (melting) (lines to face & hair)





113 18" FRENCH PAPER MACHE SHOULDER HEAD, painted features, black painted hair with brown mohair braided wig, kid body, early floral dress with hat

114 11 1/2" PAPER MACHE SHOULDER HEAD, painted features, black Apollo knot hair, cloth body with wood arms & legs, early silk dress, (paint touchup back of neck)

115 12" PAPER MACHE SHOULDER HEAD, painted features, black center part hair with long curls & bun, kid body with wood arms & legs, early yellow silk dress (melting), (one line in shoulder plate)

116 8" PAPER MACHE SHOULDER HEAD, painted features black Apollo knot hair, wood arms & legs, kid body, early dress (melting), (lines to shoulder plate)

117 8" PAPER MACHE SHOULDER HEAD, painted features, black center part hair with sausage curls, kid body with wood arms & legs, early blue dress

118 11" FRENCH PAPER MACHE SHOULDER HEAD, painted features, cloth body with kid arms, brown mohair wig, early outfit

119 11" FRENCH PAPER MACHE SHOULDER HEAD, black painted hair with curls, painted features, carton moule body with wood arms & legs, early outfit, (repair to right ankle) Blue ribbon 1st place 2016 Doll Collector's of America annual meeting

120 LOT OF 2 - 12" TOPY TURVEY CLOTH DOLLS, black/white, pressed & painted features, red dress & pink dress with UFDC 3rd place ribbon 2005 Philadelphia convention

121 14 1/2" BABYLON RAG DOLL, painted features, molded cloth body, original dress (melting) (damage above right eye)

122 17" KAMKINS MOLDED MASK FACE with painted features, cloth body, blonde mohair wig, red Kamkins heart label on chest, black outfit (not original)

123 23" ROLLINSON DOLL PAINTED FEATURES with stockinette head, blond curly hair (paint loss), cloth body (stains), stitched fingers, white dress, blue eyes, (facial rubs)

124 20" ROLLINSON DOLL PAINTED FEATURES with stockinette head, blond curly hair (paint loss), cloth body (stains), stitched fingers, white dress, brown eyes, (facial & hand rubs)

125 15 1/2" KESTNER 162 LADY DOLL, brown glass sleep eyes, OM with teeth, brown HH wig, straight wrist compo body, early dress, with 18"L x 11"W x 11" T dome top trunk with contents, 5 dresses, 2 corsets, parasol, undergarments, & accessories. Provenance - The Kestner 162 "Nita" traveled in the doll trunk with the Pesant family from Hoboken, NJ on August 24th, 1911 to Boulogne (Paris) & returned on June 17, 1912, see enclosed pamphlet. The doll won 1st place at The Doll Collector's of America annual meeting in 2011 & Voted our Favorite Doll at the 2011 DCA annual meeting.

126 14 1/2" ALABAMA BABY ALL CLOTH DOLL, painted features, wispy brown hair, stitched on ears, cloth body w/ patent stamp No. 0, Sept 26 1905, (wear & paint loss)

127 14" ALABAMA BABY CLOTH DOLL, PAINTED FEATURES, brown bob hair style, cloth body with stamp Ella Smith (hard to read), orange/red painted boots, (wear & paint loss to areas)

128 LOT OF 2 - 13" PRESSED CLOTH CHASE DOLLS, painted features, pressed cloth bodies, dressed as boys in blue gingham & black shorts with white shirt, 1 open, 1 closed mouth, (wear & facial rubs)

129 16" PRESSED CLOTH CHASE DOLL, PAINTED FEATURES, blonde bob hair, cloth body, (cracks to oil paint in hair areas)

130 13" STEIFF FELT DOLL, CENTER FACIAL SEEM, blue shoe button eyes, Steiff button in left ear, green felt outfit, (wear, hole, soil to face, moth holes to clothes & hand)

131 17" EARLY R J WRIGHT SHEPHERDESS FELT DOLL, painted features, all felt, blonde braided side curls, moveable limbs, holding bentwood crook, (Gretchen?)

132 16 1/2" SCHOENHUT WOOD DOLL, painted features, blonde mohair wig, moveable limbs, white & gold stripe dress, (minor facial rubs)

133 16" WAX OVER COMPO SHOULDER HEAD, blue glass sleep eyes, CM, PE, blonde mohair wig, cloth body with compo limbs, painted blue button boots (left foot cracks), early blue outfit (faded & worn), remnants of old tag "wax doll 1865"

134 PAIR OF 23" ARTIST DOLLS PORTE BONHEUR LE BISQUE son fetiche "Jacques & Monica" painted oil molded cloth facial features over straw stuffing, cloth bodies, ethnic outfits

135 ARTIST DOLL BY JANCI DOLLS (J. Sanders & N. Elliott), 6 1/2" Hitty MK.1998 carved wood w/ painted features, signed desk & stool, 12 dresses, 6 hats, trunk, & Lot of accessories

136 LOT OF 3 – R J WRIGHT "WINNIE-THE-POOH" pocket felt dolls, Pooh 3046/3500, Eyore 2720/3500, & Tigger 354/3500, MIB

137 21" METAL HEAD DOLL MK. GERMANY, brown glass eyes, OM with teeth, brown mohair wig, cloth body with metal arms, early outfit

138 LOT OF 2 – 12" JOEL ELLIS SPRINGFIELD VT 1873 wood dolls, no clothes, painted heads & torso, moveable mortise & tenon arms & legs, painted metal hands & feet, 1 – rare black paint example with black hands & feet, 1- white example with white hands, wood bodies in excellent shape, painted surfaces show wear & paint loss

139 LOT OF 2 – 15" JOEL ELLIS SPRINGFIELD, VT wood dolls 1873, no clothes, moveable mortise & tenon arms & legs, metal arms & legs, 1- has been paint stripped to all natural wood & metal (right elbow & leg joint repair), 1 – painted black hair & white features, painted white hands & black shoes, painted surface show wear & paint loss

140 LOT OF 2 – 18" JOEL ELLIS SPRINGFIELD, VT wood dolls 1873, no clothes, moveable mortise & tenon arms & legs, painted metal hands & feet, 1- carved & painted blonde hair, white face, (heavy wear & paint loss to painted surfaces) 1 – doll with no head, (we believe this was a prototype, the body & mortise cuts are different & crude, the lathe marks are still on the body base, & it looks like it never had a head)

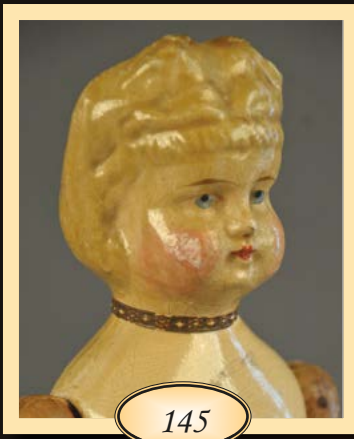
141 15" JOEL ELLIS SPRINGFIELD, VT wood doll 1873, moveable mortise & tenon arms & legs, painted features with carved blonde hair, painted metal hands & feet, dressed as a man in early outfit with top hat, (paint loss & wear)

142 11 1/2" MASON & TAYLOR SPRINGFIELD, VT carved wood doll, gesso & painted features, moveable mortise & tenon arms & legs, metal hands & feet (blue paint), black waist band with inscription "Improved Jointed Doll Patented April 29, 1879" gold neck collar, no clothes, a mint example

143 12" MASON & TAYLOR SPRINGFIELD VT wood doll, rare bald head baby model, gesso covered painted features including the hands, blue painted boots with orange trim, no clothes

144 2 - 11 1/2" MASON & TAYLOR SPRINGFIELD VT wood dolls, gesso covered painted features, moveable mortise & tenon arms & legs, metal hands & feet, one black hair, one blonde hair, painted blue boots, (paint loss & wear), no clothes





145



146



147



148



149



150



151



152



153



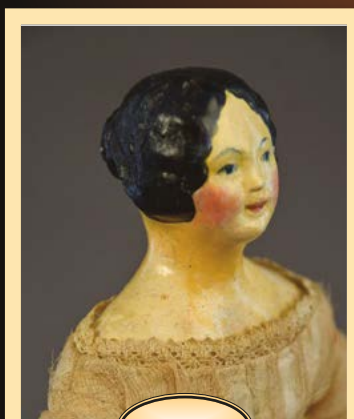
154



155



156



157



158



159



160

145 11 ½” MASON & TAYLOR SPRINGFIELD VT WOOD DOLL, swivel head (Johnson head?), model, gesso covered painted features, mortise & tenon arms & legs, metal arms & feet, blue painted boots, no clothes, paint loss & wear

146 11 ½” MARTIN SPRINGFIELD VT WOOD DOLL, swivel head (Johnson head?), gesso covered painted features, blonde hair, mortise & tenon arms & legs, metal arms & feet, white dress (loose arms), paint loss & wear

147 11 ½” MARTIN SPRINGFIELD VT WOOD DOLL, swivel head?, gesso covered painted features, blonde hair, mortise & tenon arms & legs, metal arms & feet, white dress (loose arms), paint loss & wear

148 2 - 11 ½” MASON & TAYLOR SPRINGFIELD VT WOOD DOLLS, gesso covered painted features, moveable mortise & tenon arms & legs, metal hands & feet, blonde hair, painted blue boots, 1 – swivel head early clothes, 1 – baby head type, no clothes, paint loss, wear, cracks

149 2 - 11 ½” MASON & TAYLOR SPRINGFIELD VT WOOD DOLLS, gesso covered painted features, moveable mortise & tenon arms & legs, metal hands & feet, blonde hair, painted blue boots, early clothes (melting), paint loss wear, cracks

150 9 ½” MASON & TAYLOR SPRINGFIELD VT WOOD WIZARD DOLL, gesso covered painted features, moveable mortise & tenon arms & legs, metal feet (blue), early paisley outfit, wear & rubs

151 LOT OF 3 – 1 - 9 ½” MASON & TAYLOR SPRINGFIELD VT WOOD WIZARD DOLL, gesso covered painted features, moveable mortise & tenon arms & legs, metal feet (blue), early paisley outfit, wear, rubs, cracks, & 2 – Mason & Taylor Wizard dolls bodies & limbs only

152 10 ASSORTED PIECES OF EARLY CLOTHING for Springfield dolls

153 12” PAPER MACHE FORTUNE TELLER, shoulder head, black pupil-less eyes, blonde molded hair, cloth body with wood limbs, many, many fortunes under skirt, (small facial lines), ex Dolores Smith collection

154 9 ½” PAPER MACHE SHOULDER HEAD MILLINERS MODEL, painted features, long black curls, kid body with wood limbs, early outfit (wear)

155 8 ½” PAPER MACHE SHOULDER HEAD MILLINERS MODEL, painted features, long black curls, kid body with wood limbs, early outfit (wear), with 10 ½” dome top trunk & doll quilt (lines to shoulder plate)

156 14 ½” PATENT MOLDED RUBBER DOLL, painted features, molded blonde hair, kid body, early outfit (melting), 2011 UFDC 2nd place ribbon

157 9 ½” PAPER MACHE SHOULDER HEAD MILLINERS MODEL, painted features, black hair bun (small hole in bun), (partial repaint?), kid body, early dress

158 10” KATHERINE THE GREAT BY DOROTHY HEIZER, padded fabric over wire armature, well defined details with painted features, burgundy velvet dress with ruffled lace sleeves, hair ornaments & jewelry, with sewn in Dorothy Heizer label

159 10” KATHERINE THE GREAT BY DOROTHY HEIZER, padded fabric over wire armature, well defined details with painted features, blue velvet dress with ruffled lace sleeves, hair ornaments, jewelry & fan, with sewn in Dorothy Heizer label

160 2– 10 ½’ & 9” QUEEN VICTORIA & PRINCE ALBERT BY DOROTHY HEIZER, padded fabric over wire armature, well defined details with painted features, Queen Victoria with blonde mohair wig wearing pink ruffled gown & pink slippers, Albert brown mohair wig, moustache & sideburns, red shirt w/ trims, black shoes with buckles, with sewn in Dorothy Heizer label.

161 10" MARY QUEEN OF SCOTTS BY DOROTHY HEIZER, padded fabric over wire armature, well defined details, painted features, black velvet dress with ruffled neck & hands, black shear overdress, black shoes, with sewn in Dorothy Heizer label

162 11" LOUIS XIV BY DOROTHY HEIZER, padded fabric over wire armature, well defined details with painted features, brown cascading hair, silk brocade court costume, black leggings & shoes, sword & walking stick, with sewn in Dorothy Heizer label

163 11" LOUIS XIII BY DOROTHY HEIZER, padded fabric over wire armature, well defined details with painted features, black cascading hair, orange felt court costume, white leggings with brown shoes, sword, with sewn in Dorothy Heizer label

164 10 1/2" THOMAS JEFFERSON BY DOROTHY HEIZER as French Ambassador, padded fabric over wire armature, well defined details, painted features, White mohair wig w/ ponytail, green suit w/ vest, carrying a scrolled paper roll, with sewn in Dorothy Heizer label

165 9 1/2" BLUE BOY BY DOROTHY HEIZER, from the Gainsborough painting, padded fabric over wire armature, well defined details with painted features, Long red mohair wig, w/ sideburns, blue silk outfit, w/ hat in right hand, white leggings, brown shoes with blue bows

166 11" RICHARD II BY DOROTHY HEIZER, padded fabric over wire armature, well defined details with painted features, blonde mohair wig with jewel crown, long red felt cape with white shoulder piece, carrying a scepter & cross, black slippers with red trim

167 5" DOROTHY HEIZER DOLL IN ORIGINAL BOX, padded fabric over wire armature, well defined details with painted features, short blonde hair, blue silk ruffled dress, blue shoes, in original box designed and signed by Dorothy Heizer

168 2 - 5" CHILD DOLLS BY DOROTHY HEIZER, padded fabric over wire armature, well defined details, painted features, one wearing a pink polka dot dress, brown hair, black shoes, one wearing a yellow silk dress, brown hair with green shoes, in Original signed Box

169 13" DOROTHY HEIZER KIT DOLL, probably sold through Pricilla Magazine in the 1920's, cloth, painted features, stuffed cloth body, early outfit

170 13" MAUDE TOUSIE FANGLE OIL CLOTH, printed features, cloth oil cloth body, white dress

171 6 1/2" ALL BISQUE, BROWN GLASS SLEEP EYES, OM w/ teeth, brown mohair wig, side curls, painted shoes & socks, white sailor outfit (soil), 10" trunk, 4 dresses & accessories

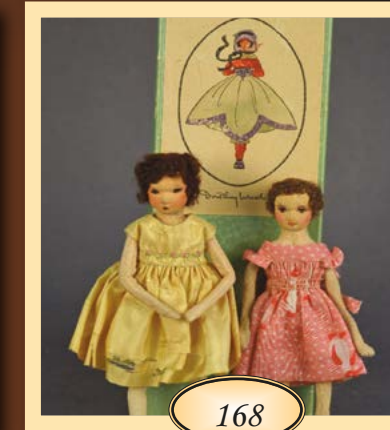
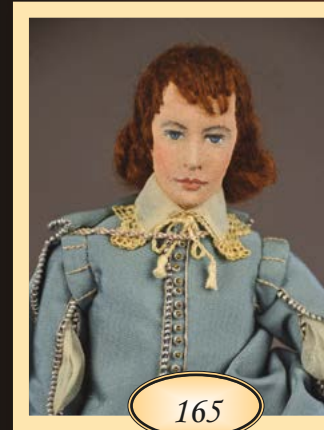
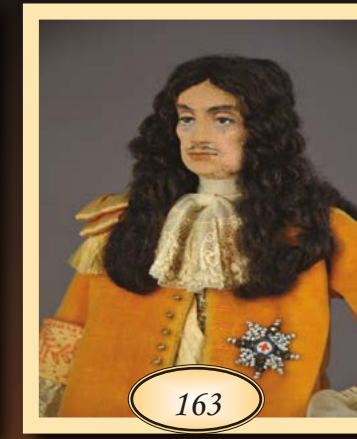
172 5 3/4" MIGNONETTE, brown glass eyes, CM, blonde skin wig, painted shoes & socks, early white outfit

173 5" MIGNONETTE, BLUE GLASS EYES, CM, blonde mohair wig with long braids, early white outfit, barefoot

174 5 1/2" MIGNONETTE, BLUE GLASS EYES, CM, long blonde mohair wig, jointed elbows, white outfit with blue trim, barefoot

175 13" CHINA PINK TINT SWIVEL HEAD ROHMER, painted blue eyes, CM, blonde mohair wig, blue stamp Rohmer kid body with wood shoulder joints, early floral dress with undergarments, white 2 button boots

176 LOT OF 4 ALL BISQUE DOLLS 3 1/2" - 5 1/2", blue glass eyes, CM, mohair wigs, early outfits





177



178



179



180



181



182



183



184



185



186



187



188



189



190



191



192

177 7 ½” VOGUE “JUST ME” 2012 UFDC DOLL from the New Orleans Convention, with 6 boxes of accessories, all MIB

178 WENDY LAWTON “KATRENA & DIMITRI” for the 2002 UFDC Convention, with box of accessories for “Katrena”

179 16” FRENCH FASHION 2 SWIVEL NECK, blue glass eyes, CM, PE, blonde mo-hair wig (pate down), early white dress, red shoes, (tiny nicks by PE)

180 LOT OF 2 - MARKLIN UFDC 50 year celebration carriage MIB, & 1995 UFDC convention doll “Charity” 1338/1510 by U. S. Historical Society wood doll MIB

181 UFDC REGION 15 CONFERENCE 2020 ESME’S Leaf Umbrella by Maggie Made Dolls, MIB

182 2 – UFDC CONVENTION DOLLS, 1 - Vogue “Just Me” UFDC Luncheon Souvenir July 29, 2002, MIB, & “Alexander” by Helen Carr for Starry Starry Night 2001 UFDC, Atlanta, MIB

183 LOT OF 2 UFDC DOME TOP TRUNKS with artist dolls & accessories

184 12” R J WRIGHT UFDC convention doll “Musette”, New Orleans 2003 MIB

185 12” R J WRIGHT UFDC 2006 “L’Enfance de Becassine & Silly Goose MIB

186 12” R J WRIGHT FELT UFDC 2006 Becassine Collection “Joel” MIB

187 10” GAIL WILSON IZANNAH WALKER DOLL REGION 15 UFDC Convention, Granite State Doll Club Sept 29 – Oct 1, 2011, MIB

188 2 – GAIL WILSON UFDC KINDRED SPIRITS dolls, MIB, 3” Kindred Spirits Dolls Doll, 2106 UFDC, & 9” Kindred Spirits in the Toyroom doll 2016, MIB (box has some damage)

189 2 – 11” UFDC MAGGIE MADE dolls by Maggie Iacono, 2009 Atlanta Convention, “Just Add Water” & 2011 “Hearts & Flowers” UFDC Convention, MIB

190 2 - 11 ½” – 11” UFDC MAGGIE MADE dolls by Maggie Iacono, 2018 “Wendy” Convention doll, & 2012 “Praline” Convention Doll New Orleans, MIB

191 2 - 11 ½” - UFDC MAGGIE MADE dolls by Maggie Iacono, 2017 Boston Regional “Josephine March” & 2020 “Joelle” convention doll, MIB

192 2 – 11 ½” UFDC MAGGIE MADE dolls by Maggie Iacono, 2016”Dennis and Denise” Convention doll, & 2019 “Fanny” Convention doll, MIB

***Please Note: Part 2 of the Picture dolls begins with Lot # 351 ***
Iva Marie Rideout Doll Collection Lots #351 - 371 (cont.)

PICTURE DOLLS - PART 2

351 2 – UFDC CONVENTION DOLLS, 2005 Philadelphia, Wentworth collection by Tonner doll & accessories, & 2007 UFDC Music, Music, Music Madame Alexander “At The Hop Cissette” doll, accessories, & trunk

352 4 – UFDC KATHE KRUSE CONVENTION DOLLS, 2 – 10” 2003 “Paul #23 & Lisa # 83 & 2 – 10” 2005 “Barbel # 40 & Manne” # 69 convention dolls, excellent condition.

353 11” “MARIE TERESE”, French fashion doll created by Alice Leverett and produced by The Vogue Doll Company, Inc. for the UFDC, 61st Convention in Chicago, IL in 2010, doll, doll accessories, & trunk, MIB, (w/ 6 boxes, one is empty, access. may be in the trunk?)

354 LOT OF 8 VINTAGE ARTIST DOLL SETS in original boxes, “The Hanako” Japanese doll with three wigs, “Seffener Brautzug” German miniature carved figures (11pcs.), Max & Moritz figures, “Christopher Naber Kid, “The adventure of two Dutch Dolls” by Florence Upton (two wood dolls & story), 6 small all bisque dolls made in Japan, Selwyn & CO. complimentary gift set for “The Laugh Festival – Twin Beds –“ Boston August 30, 1915 – 2 miniature twin beds

355 LOT OF 7 SMALL ALL BISQUE DOLLS 3 ½” – 6”, 6 – with painted features, 1- brown sleep eyes incised 150, various outfits

356 16” DEWEES COCHRAN ARTIST BOY DOLL, latex composition. molded & painted features, blonde HH wig, 5 piece body, OCM with teeth, blue wool trousers & plaid shirt, back of neck label

357 14 ½” DEWEES COCHRAN ARTIST GIRL DOLL, latex composition, molded & painted features long blonde HH wig, 5 piece body, CM, original shear dress (as found), (slight knee nick & mark on the back of the neck, stress line above left wrist & left upper arm, left leg calf scuffs)

358 LOT OF 7 PAPER MACHE HEAD DOLLS of various ages, 1 ½” UFDC doll – 7 ½” peg wooden, including 6 ½” Ray Brindarmour bust on mount, great early 4” tuck comb

359 LOT OF 6 5” JAN DAVIES ARTIST DOLLS, woven trunk, & accessories, purchased at the 2003 UFDC Convention

360 9” MOLDED BOW BISQUE HEAD CHARACTER with compo 5 piece body and suitcase full of clothes (Ex Dolores Smith collection)

361 9 ½” AM JUST ME, blue glass sleep eyes, CM, brown mohair wig, compo toddler body, light blue dress

362 8” MAGGIE MADE ARTIST DOLL “MARIE” for UFDC 2007 Convention, MIB

363 12” WOOD ARTIST DOLL BY XENIS “EMMA” 44/48, made for the 2015 Region 14 Conference of The Shaker Doll Club

364 9 ½” 19TH CENTURY CARVED WOODEN post doll, flat face with carved features in low relief, carved hooded head, long dress w/ incised markings, left hand in pocket, right hand & front wood post beetle damage, early varnish finish, Provenance Carol Cameron, England

365 5 ½” ARTIST MIGNONETTE BY DARLENE LANE with access. UFDC Convention?

366 8 ½” FAWN ZELLER ARTIST DOLL “JANETTE” painted features, brown bun, cloth body, UFDC 50th year anniversary doll



351



352



353



354



355



356



357



358



359



360



361



362



363



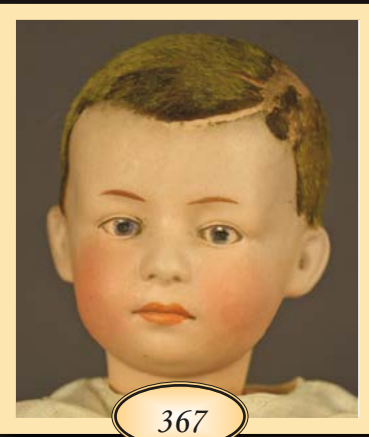
364



365



366



367



368



369



370



371



372



373



374



375



376



377



378



379



380



381



382

367 11 1/2" HEUBACH 7602 POUTY BOY, intaglio eyes, flocked hair (some missing), BJC, white outfit

368 LOT OF 2 - BISQUE DOLLS, 11 1/2" 1896, brown glass eyes, OM with teeth, kid body, (no wig), with accessories, 14" Mabel 1914, brown glass sleep eyes, OM with teeth, brown mohair wig, cloth body, white dress

369 LOT OF 2 - BISQUE HEAD DOLLS, 7" 253 Googly (repro), on old compo body, white dress, & 7" AM Dream baby

370 LOT OF 3 - 11" WAX SHOULDER HEAD, blue glass eyes, brown mohair wig, CM, kid body with compo limbs (left foot damage), blue dress, 13" K*R all compo, blue glass sleep eyes, OM with teeth, blonde mohair wig, blue dress, & 25" compo shoulder head, brown glass sleep eyes, OM with teeth, red mohair wig, kid body, pink knit dress

371 LOT OF 6 - 7 1/2" GINNY VOGUE DOLLS, 1 - compo with painted eyes marked Vogue (some facial crazing), 5 - Hard plastic, 3 - walking dolls, 2 - strung dolls, most have marked clothing, along with 12 pcs of marked clothing & access. with a 18 1/2" lift top trunk.

372 6 1/2" ALL BISQUE 1, brown glass sleep eyes, CM, blonde mohair wig, painted 4 strap boots, blue/white outfit

373 17 1/2" STEINER GIGOTEUR, DOME HEAD, blue glass eyes, OM with teeth, PE, compo arms, kid lower walking body with wind up mechanism & key wind, head & arms move, HH wig, white dress, working condition, (tiny nick left eye corner)

374 11 1/2" FASHION DOME SHOULDER HEAD, painted features, blonde mohair wig, cloth body with bisque limbs, painted boots, rosy checks, green dress

375 12" GERMAN S&H FASHION SWIVEL NECK, blue glass eyes, CM, blonde mohair wig, twill over wood body, bisque arms & legs, white/blue walking outfit, (tiny chip back of head at socket & small hairline)

376 14" BISQUE 6, BLUE GLASS EYES, CM, PE, blonde mohair wig, straight wrist compo body (toe chip), pink dress, wig glued down

377 12" WAX OVER COMPO, DARK PUILESS EYES, PE, CM, blonde hair with dark blue ribbon, cloth body, compo limbs, early brown dress, (rubs & dents)

378 11 1/2" PAPER MACHE SHOULDER HEAD, painted features, red mohair wig, cloth body with wood limbs, top hat & black check suit

379 19 1/2" BRU JNE 7, BLUE GLASS EYES, CM, blonde HH wig, kid body (repairs), bisque arms, (no little finger right hand), long hairline under left eye across cheek to left rim)

380 21" FRENCH FASHION SWIVEL NECK SHOULDER HEAD, blue glass eyes, CM, PE, brown HH wig, cloth body bisque arms, tan/green walking suit (melting)

381 20 1/2" STEINER B 3, BLUE GLASS EYES, OM, 2 rows of teeth, PE, blonde mohair wig, straight wrist compo body, blue sailor dress, (forehead has been professionally repaired)

382 24" JUMEAU E11J, BLUE GLASS EYES, CM, PE, blonde mohair wig, blue stamp Jumeau compo body, (2 - 1/2" firing lines at center forehead rim & one above left eye at rim)

383 20" PAPER MACHE SHOULDER HEAD, painted features, CM, painted blonde curly hair, cloth body with leather arms (right hand damage), early outfit (melting), red leather boots, (lines on shoulder plate)

384 17" FRENCH FASHION SHOULDER HEAD E 4 B BARRIO, blue glass eyes, CM, red HH wig, kid body with bisque arms, red paisley dress, (2 – hairline center forehead)

385 17" FRENCH FASHION SWIVEL NECK SHOULDER HEAD, blue glass eyes, CM, PE, blonde mohair wig, kid body, red silk dress, (excessive wig glue, black mold speck on nose)

386 19" DOME SHOULDER HEAD, blue glass eyes, CM, brown HH wig, cloth body with kid arms, blue dress, (large repair to shoulder head under neck)

387 16 ½" E6D DEPOSE, brown glass eyes, OM with teeth, PE (nick), red HH wig, (chin rub, rim nick), off white dress

388 19" BLONDE CURLY HAIR PARIAN SHOULDER HEAD, blue glass eyes, CM, PE, cloth body with leather arms, yellow check walking dress, (long shoulder plate hairline)

389 29" PAPER MACHE SHOULDER HEAD, dark pupiless eyes, CM, painted black curly hair, cloth body (replaced leather hands, early outfit, (restorations & repaints)

390 10" KENTUCKY FOLK ART POPPET BY ANNIE COMBS, carved wood head, arms & legs, cloth upper legs, painted & pencil features, red mohair wig, painted black shoes with heels, early floral dress

391 10" PAPER MACHE HEAD KEY-WIND AUTOPERIPATETIKOS, painted features, metal feet, wood base w/ patent- "July 15th 1862", early outfit, leather hands, in working order

392 12 ½" LENCI ALL FELT OPIUM SMOKER, painted features black mohair braided wig, closed mouth with opening (for the opium pipe), short legs with blue/yellow slippers, slightly soiled clothing/face, tiny moth hole back of left slipper, UFDC blue ribbon 1991 New Orleans (& Dorothy Coleman letter)

393 16" BLONDE HAIR CHINA MARKED "WIMER'S 49" a student of Emma Clear, painted features, hair snood, cloth body with china arms, gold dress, blue ribbon Long Island doll show 1993

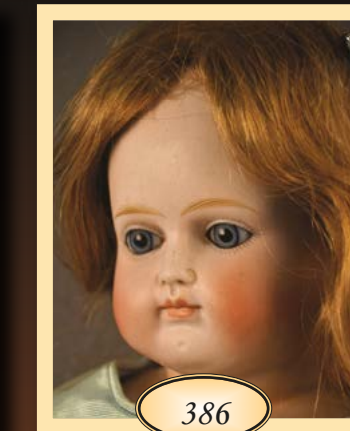
394 22" ARTIST DOLL "BAG LADY", felt molded head, blue glass eyes, black/gray mohair, cloth body on metal armature, felt hands, painted soiled features, 1986 Blue Ribbon NY Doll Club, appropriate outfit

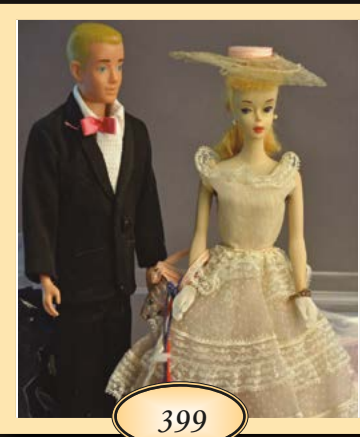
395 19" METAL HEAD PEDDLER LADY, brown glass eyes, painted features, molded blond hair, cloth body, kid hands, red cape & early clothes, peddler basket, 1979 1st place ribbon Patchogue NY doll show

396 LOT OF 3 PAPER MACHE DOLLS. 9" milliners model, painted features, elaborate black hair, wood body/limbs, blue painted shoes, early outfit, (facial & shoulder plate cracks), 11" paper mache shoulder head, painted features, wood body/limbs, black painted hair, early outfit, yellow painted shoes, & 6" paper mache shoulder head, painted features, black hair, wood body/limbs. early outfit

397 11 ½" BISQUE S*PB*H SCHOENAU & HOFFMEISTER Harlequin squeeze toy, brown glass eyes, OM with teeth, symbols clash when belly squeezed, blonde mohair wig, 1985 1st place ribbon Long Island doll show

398 10 ¾" BISQUE UNIS FRANCE 60 BLEUETTE, blue glass eyes, OM with teeth, blonde mohair wig, compo body feet marked 1, white needle work dress, (mold rough spot left side of nose)





399



400



401



402



403



404



405



406



407



408



409



410



411



412



413



414

- 399 11" #3 BLONDE PONYTAIL BARBIE**, pearl stud earrings, brown eyeliner, blue eyes, dark red lips, with stand & large assortment of clothes & many 1st & 2nd place ribbons & 12" Ken in black suit
- 400 LOT OF ASSORTED DOLL SMALLS & MINIATURES**, hats, muffs, purses, gloves, etc.
- 401 LOT OF 12 ASSORTED CHINA & BISQUE DOLLS**, 3 1/2" - 8", half dolls, bathing beauties, ballerinas, etc.
- 402 LOT OF 3 - 6" VINTAGE JAPANESE DOLLS** in elaborate costumes on black lacquer wood base, these type of dolls were presents at wedding ceremonies
- 403 LOT OF 10 - 3" - 5" GOFUN HEAD VINTAGE JAPANESE** dolls in elaborate costumes, seated & standing, (some facial lines), & lot of lacquer miniature furniture to go with dolls
- 404 LOT OF 6 - 4" - 7" GOFUN HEAD VINTAGE** Japanese dolls in elaborate costumes, along with stands & accessories
- 405 LOT OF 5 - VICTORIAN ERA MINIATURE ABALONE SHELL & brass desk** items, 5 1/2" T - 2 vial perfume in hinged shell on alabaster base, 3" T hinged shell on alabaster base (hinge repair), side chair with shell seat, shell cart with butterfly handle, 2 1/2" T hinged shell on footed wire stand
- 406 LOT OF 25+ PCS OF MINIATURE CHINA & BISQUE** figures & smalls 1 1/2" - 3" some marked Limoge
- 407 20" ALL ORIGINAL TONI DOLL BY IDEAL**, original hang tag, play wave kit in original box, & partial original box, 1991 1st place ribbon Modern Doll Club of New York (arms are off)
- 408 LOT OF 2 - SHIRLEY TEMPLE DOLLS**, 17" compo all original w/ pin (1 damaged finger right hand), & 11 1/2" vinyl by Ideal w/ tag, both in very good condition
- 409 14" DEWEES COCHRAN PORTRAIT DOLL**, painted features, CM, HH wig, composition head & body, original outfit, 1993 Blue ribbon Long Island doll show
- 410 3 - 9" LENCI DOLLS**, PAINTED FEATURES, felt, original tags, native costumes (some soil & wear)
- 411 14" SWISS WOODEN DOLL**, PAINTED FEATURES, carved hair, jointed wood body, brown silk dress, (slight staining)
- 412 LOT OF 5 - 3 1/2" SHUCO STICK OUT TONGUE MOHAIR BEAR**, 4 1/2" Schuco combing hair wind up monkey (very worn), 6" mohair wind up stick out tongue with ice cream cone, 9" yes/no felt Elf, 9" wind up bear vibrates & licks ice cream cone
- 413 13 - NORAH WELLINGS DOLLS** 7" - 13", assorted dress & nationalities, painted features
- 414 5 1/2" BLACK HAIR CHINA** IN 9" T WOOD PRESENTATION BOX, painted features, antique dress

415 LOT OF 15 – SMALL MARKED STEIFF ANIMALS, 2” – 6”, Joggi, Leo, Hansi, Witte, Mockie, Peggy, Cosi Bibi, lamb, squirrel, monkey, 2 – rabbits, tiger, rooster, & 4 additional small animals

416 LOT OF 3 – MOHAIR BEARS, 6” T GERMAN BERNHARDT & DORST performing windup bear, gold mohair, waves hand and moves head back & forth, blue ribbon (some wear), 10” English blonde mohair bear, jointed head & limbs, red ribbon (wear), & 4” brown mohair bear, glass eyes, early Steiff button

417 LOT OF 7 MARKED STEIFF ANIMALS/MAN 3” – 12”, Gucki, blue 1988 Teddy, Zoty, etc., & 2 unmarked Steiff animals, panda & teddy, good condition

418 LOT OF 21 SMALL MOHAIR DOGS/HAND PUPPET 3” – 8”, some Steiff, various breeds

419 13” FRENCH FASHION, SWIVEL NECK, BLUE GLASS EYES, CM, PE, blonde mohair wig, kid body, blue dress, antique boots, parasol, (right cheek rub)

420 14 ½” J.K. FARNELL CO. LONDON FELT 1937 coronation doll, Royal Highlander, painted features, appropriate dress (nose rub, felt is soiled)

421 8 – SMALL ALL BISQUE DOLLS 3” – 4”, 4 – with painted features, 4 – with glass eyes, CM, painted shoes & socks, various outfits

422 7 ½” SWISS JOINTED METAL BUCHERER LADY character doll, painted features, circa 1920’s, long white/black stripe apron

423 14 ½” MADAME ALEXANDER “LITTLE SHAVER” cloth doll circa 1930’s painted features, original tagged outfit, (light wear & light soil)

424 7 – ALL BISQUE/CHINA SMALL DOLLS 1 ¼” – 6”, including 83/100 in original box, 4 ½” 217 Googly, 3” in presentation box with accessories, 2 – parian type

425 LOT OF 5 – 2 – 9 ½” RAVCA MAN & woman stockinette dolls painted features, & 3 – Skookum Indian blanket dolls man, woman, & baby painted features

426 LOT OF 11 SMALL - 2 ½” – 6” ALL BISQUE/PARIAN DOLLS, 2 – with glass eyes, 8 – painted features, 6 – parian type, all dressed

427 LOT OF 5 SMALL 3 ½” – 6 ½” CHINA HEAD DOLLS, PAINTED FEATURES, & 1 – 9” bisque shoulder head, black painted hair, cloth body, all dressed

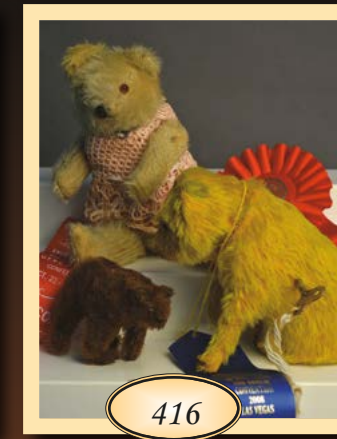
428 11 ½” CARVED WOOD DOOR OF HOPE, carved and painted features, muslin body, elaborate silk red outfit & slippers

429 4 – BISQUE HEAD DOLLS, 8” HALBIG K*R, blue glass sleep eyes, OM with teeth, blonde mohair wig, compo body, 6 ½” P 13/0, brown glass eyes, OM with teeth, blonde mohair wig, compo body (firing line back of head), 8” Belton type O, blue glass eyes, CM, blonde mohair wig, compo body, & 7” key wind autoparatiktos type, blue glass eyes, OM with teeth, blonde mohair wig, (over wound), all dresses

430 LOT OF 8 SMALL ANIMALS/TOYS & SMALL DOLL SUITCASE/TRUNK, 4 ½” windup mohair duck with tin bill & feet with frog on back (occupied Japan), 6” windup mohair llama head & tall move (Japan), 6” mohair bear pull toy on metal wheels (very worn), 3” skin covered dog, 4” mohair panda bear swivel head moveable arms (Steiff?), small dog & sheep, & small suitcase & paper covered trunk



415



416



417



418



419



420



421



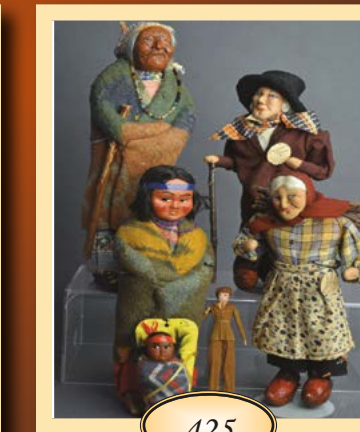
422



423



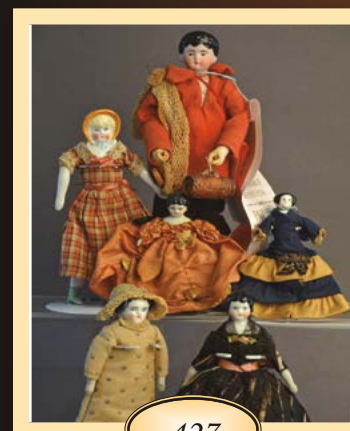
424



425



426



427



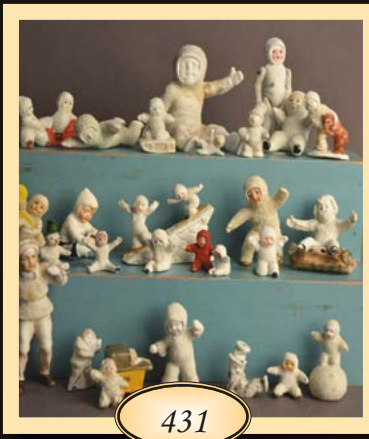
428



429



430



431



432



433



434



435



436



437



438



439



440



441



442



443



444



445



446

431 LOT OF 27 MINIATURE VINTAGE SNOW BABIES 1" – 3", some German, some newer, various poses, some slight staining

432 3 – ANTIQUE CHINESE NUDE FIGURAL PERFUME BOTTLES, porcelain, painted features with flower in head that is a stopper/swab for perfume

433 8 – MINIATURE CARL HORN DOLLS/ANIMALS 1 1/8" – 1 1/2" tall, knit covered elephant & monkey, 5 – knit costumed bisque boys & girls, 1 – no clothing

434 3 – GERMAN KEWPIE DOLLS, 2" DOODLE DOG marked with C in circle on base (nick on right ear), 2 1/2" Huggers marked with paper red heart, & 4 1/2" Kewpie with Rosie O'Neil paper label on back

435 22" PORTRAIT JUMEAU 10, blue glass eyes, OM, PE, blonde mohair wig, applied ears, blue stamp Jumeau Medaille D'or Paris compo body, red dress (left hand index finger compo chip, lower legs need stringing)

436 23" CHASE STOCKINETTE DOLL, painted features, cloth body with Chase stamp on left leg, blue knit outfit, very good condition

437 26" EMMA CLEAR BLONDE HAIR PORCELAIN DOLL, painted features, CM, sculpted blonde hair with blue ribbon, cloth body with kid arms, green silk dress (melt-ing), leather boots

438 36" BISQUE ALT, & GOTTSCHALK 1362 "SWEET NELL", blue glass eyes, OM with teeth, red mohair wig, BJCB, (wig glued down), red trim dress

439 23" BISQUE K*R SIMON HALBIG 121, blue glass eyes, OM wobbly tongue, blonde mohair wig, blue/white floral dress, (tiny cheek rubs)

440 28" BISQUE CM BERGMAN SIMON HALBIG 13 1/2, brown glass sleep eyes, OM with teeth, PE, blonde mohair wig, BJCB, white dress, (excessive wig glue)

441 7" R. J. WRIGHT FELT "KEWPIE Peppermint Scottles", PS#288/300, MIB

442 12" R. J. WRIGHT FELT 2003 UFDC NEW ORLEANS convention doll "Musette", MIB

443 3 – ARTIST DOLLS, 2004 UFDC "REMEMBERING PLAYTIME" Kathe Kruse & clothes, 8" Peggy Nisbet "Teddy Roosevelt & Friend Commemorative Set", & 12" Kathy Redmond Christopher Columbus, 1992 Region 13 Conference

444 21" ELOISE CLOTH DOLL CIRCA 1950's, painted features, yellow yarn hair, pleated blue felt skirt, & Kay Thompson's Eloise book (1983)

445 3 – SMALL BISQUE DOLLS, 9" 275 DEP, blue glass eyes, OM with teeth, blonde mohair wig, PE, compo body, pink outfit, 8" all bisque, blue glass eyes, CM, red mohair wig, white/pink dress, & 8" SFBJ 60 Paris, brown glass eyes, CM, blonde mohair wig, compo body, black dress

446 11" "DIVING DAN" MYSTERY DOLL with hang tag floats in his rubber coat, 2 – 1st place ribbons, head appears to be plastic, painted features



<<<<< 447 4" PEG WOODEN, PAINTED FEATURES, glass dome, painted red shoes, early outfit, 2 – 1st place ribbons



448 15 1/2" SHEILA KWARTLER ARTIST DOLL >>>> WIZARD OF OZ WICKED WITCH of the West Doll, UFDC Region 14 October 1982 tag, sculpted & painted features, with broom



<<<< 449 2 – DOLLS, 7 1/2" ALL BISQUE, BROWN GLASS SLEEP EYES, OM with teeth, brown mohair wig, painted shoes & socks, white dress, & 9 1/2" Snow baby shoulder head, painted features white/pink hood, pink/white snow outfit



287 AMERICAN CLOTH DOLL BY ROXANNA COLE >>> 15" Flat faced w/ painted features and hair, cloth body, wearing a old white dress, unders & pink bonnett; Plus 2 cloth dolls: 11" Topsey Turvey in red & 11" cloth baby painted features

**The End of the Picture Dolls
Non-Picture start at # 193**

Non-Pictured Dolls

- 193 2 – BISQUE DOLLS, 24" QUEEN LOUISE, blue glass sleep eyes, OM with teeth, brown mohair wig, BJCB, white dress, & 21" AM 390, brown glass eyes, OM with teeth, blonde mohair wig, BJCB, white dress
- 194 2 – BISQUE DOLLS, 22" AM 370, blue glass sleep eyes, OM with teeth, blonde mohair wig, kid body (as is), white dress, & 24" G B, blue glass sleep eyes, OM with teeth, red mohair wig, BJCB, white dress (back neck chip)
- 195 2 – BISQUE DOLLS, 22" AM 390, blue glass eyes, OM with teeth, brown mohair wig, BJCB, floral dress, & 20" AM 390, brown glass sleep eyes, OM with teeth, brown mohair wig, BJCB, blue dress
- 196 2 – BISQUE DOLLS, 20" SHOULDER HEAD, brown glass sleep eyes, OM with teeth, blonde mohair wig, kid body, white dress, & 13 1/2" AM 370, blue glass eyes, OM with teeth, blonde mohair wig, BJCB
- 197 2 – BISQUE DOLLS, 22" QUEEN LOUISE, brown glass sleep eyes, OM with teeth, blonde mohair wig, BJCB (forearm damage), purple dress, & 23" Simon Halbig Handwerck, brown glass eyes, blonde mohair wig, OM with teeth, PE, BJCB
- 198 2 – BISQUE DOLLS, 16" AM 390, brown glass eyes, OM with teeth, brown mohair wig, BJCB, & 18" "Viola", brown glass sleep eyes, OM with teeth, blonde mohair wig, BJCB
- 199 2 – BISQUE DOLLS, 21" CM BERGMAN 1916, blue glass sleep eyes, OM with teeth, blonde mohair wig, BJCB, white dress, (head damage) & 22" Handwerck, Halbig, blue glass sleep eyes, OM with teeth, PE, brown mohair wig, BJCB, blue dress
- 200 2 – BISQUE DOLLS, 23" CM BERGMAN SIMON HALBIG, brown glass sleep eyes, OM with teeth, PE, brown mohair wig, BJCB, white dress, & 24" Handwerck Simon Halbig, blue glass sleep eyes, OM with teeth, PE, blonde mohair wig, white dress
- 201 2 – BISQUE DOLLS, 16" SHOULDER HEAD (cracked), blue glass eyes, OM with teeth, blonde mohair wig, kid body, off white dress, & 18" Handwerck Simon Halbig, blue glass sleep eyes, OM with teeth, PE, BJCB, white dress
- 202 2 – BISQUE DOLLS, 21" AM 390, blue glass eyes (need to be reset), OM with teeth, brown mohair wig, BJCBm pink dress, & 25" Handwerck 109 (crack in back of head), brown glass eyes, OM with teeth, blonde mohair wig, BJCB, white dress
- 203 2 – BISQUE DOLLS, 25" AM 390, blue glass sleep eyes, OM with teeth, brown mohair wig, BJCB, floral dress, & 25" Handwerck, brown glass sleep eyes, OM with teeth, blonde mohair wig, BJCB (needs stringing), purple dress
- 204 29" BISQUE K*R SIMON HALBIG, brown glass sleep eyes, PE, OM with teeth, brown mohair wig, BJCB, white dress
- 205 2 – BISQUE DOLLS, 18" "VIOLA", blue glass sleep eyes, OM with teeth, red mohair wig, BJCB, white dress, & 17" CM Bergman Simon Halbig, blue glass sleep eyes, OM with teeth, PE, blonde mohair wig, BJCB, white dress
- 206 30" BISQUE SIMON HALBIG 1080, blue glass eyes (need to be reset), OM with teeth, PE, brown mohair wig, BJCB, white dress
- 207 30" BISQUE SIMON HALBIG HANDWERCK, blue glass sleep eyes, PE, OM with teeth, brown mohair wig, BJCB, white dress
- 208 25" BISQUE S&H K*R 66, blue glass sleep eyes, PE, OM with teeth, blonde mohair, BJCB, white skirt
- 209 24" BISQUE S&H K*R 66, brown glass sleep eyes, PE, OM with teeth, brown mohair wig, BJCB, white dress
- 210 26" BISQUE S&H 1349 JUTTA, brown glass sleep eyes, PE, OM with teeth, brown mohair wig, BJCB, white dress
- 211 24" BISQUE HANDWERCK SIMON HALBIG, blue glass sleep eyes, OM with teeth, PE, blonde mohair wig, BJCB, white dress
- 212 23" BISQUE WALKURE, blue glass sleep eyes, OM with teeth, PE, blonde mohair wig, BJCB, white dress

213 2 – BISQUE DOLLS, 15 ½” SHOULDER HEAD 61-27, blue glass eyes, OM with teeth, PE, blonde mohair wig, cloth/kid body, white dress (chip on right forehead), & 25” Shoulder head “Ruth” (as is)

214 28” BISQUE 1078 (kit form in original box)

215 LOT OF 3 BISQUE DOLLS, 9” KLEY & HAHN 525 toddler, 11” Heubach 6894 toddler, & 12 ½” Simon & Halbig 126 Baby, blue glass flirty eyes, OM, compo body

216 LOT OF 6 SMALL BISQUE HEAD dolls in AS IS condition

217 LOT OF 8 ASSORTED HALF DOLLS 2” – 3 ½”

218 LOT OF 3 – 16” BLACK HAIR CHINA, painted features, pink painted boots, cloth body (left hanging arm), 16” Kestner Century Baby, cloth body, hairline right forehead, & 13” shoulder head, kid body, (bad head crack)

219 2 – BISQUE DOLLS, 21” KESTNER SHOULDER HEAD 13, brown glass sleep eyes, OM with teeth, Kid body (as is left arm), blonde mohair wig, (broken thumb), & 17” DEP, blue glass eyes, OM with teeth, cloth body, blonde mohair wig, regional dress

220 BOX LOT OF ASSORTED doll clothes

221 BOX LOT OF ASSORTED DOLL HATS, shoes, etc.

222 2 – BISQUE BABY DOLLS, 17” K*R SIMON HALBIG 126, brown mohair wig, brown glass eyes, OM, compo body, & 16” JDK Hilda (kit form, head cracks)

223 2 – BISQUE DOLLS, 22” QUEEN LOUISE, blue glass sleep eyes, OM with teeth, brown mohair wig, BJCB, white/blue dress, & 14” Alma, brown glass eyes, OM with teeth, red mohair wig, jointed cloth body, white dress (dirty)

224 2 – BISQUE DOLLS, 22” G&S GERMANY, blue glass sleep eyes, OM with teeth, brown mohair wig, BJCB, white dress & 17” C Made in Germany, blue glass sleep eyes, OM with teeth, blonde mohair wig, BJCB, white dress

225 2 – BISQUE DOLLS, 12” 151 CHARACTER BABY, blue glass sleep eyes, OM, baby compo body, white dress (needs stringing), & 16” 914 baby compo body, blue glass sleep eyes, OM, brown mohair wig, white dress (2 fingers broken right hand)

226 2 – BISQUE DOLLS, 20” K*R 53, blue glass eyes, OM with teeth, PE, blonde mohair wig, BJCB, white/pink dress, & 12” Unis France, blue glass sleep eyes, brown mohair wig, OM with teeth, BJCB (replaced legs) sleep eyes lose)

227 LOT OF 7 ITEMS, 10” STEIFF “MR. VANILLA BEAR, 10” “Limerick Bear Frightful Ride” by Lynn & Phil Gatto, 9” Olde Friends Bear, 16” e Willoughby Bear, white, Steiff paperwork in pouch, folk art black cat on wheels, & 7” Steiff tan mohair bear

228 25” CM BERGMAN SIMON & HALBIG, blue glass eyes, OM with teeth, PE, brown mohair wig, BJCB (some parts replaced), white dress

229 26” DEP, BLUE GLASS SLEEP EYES, OM with teeth, PE, brown HH wig, BJCB (very worn hands), white dress

230 2 – BISQUE DOLLS - 26” AM 390, brown glass sleep eyes, OM with teeth, Red mohair wig, BJCB, white dress, & 25” AM 390, brown glass eyes, OM with teeth, brown mohair wig, BJCB, white dress

231 2 – BISQUE DOLLS – 13” Made in Germany shoulder head, brown glass sleep eyes, OM with teeth, blonde mohair wig, kid body (loose left arm), white dress, & 12” 1349 Dressel S&H, brown glass sleep eyes, OM with teeth, PE, brown braided mohair wig, black check dress

232 2 – BISQUE DOLLS – 18” CM BERGMAN Simon Halbig, brown glass sleep eyes, OM with teeth, PE, blonde HH wig, BJCB (right hand damage), blue dress, & 23” 109 DEP Germany H, blue glass sleep eyes, OM with teeth, PE, blonde HH wig, BJCB, pink dress

233 31” MADE IN GERMANY 16, blue glass sleep eyes, CM, brown mohair wig, BJCB, white outfit

234 23 ½” 1894 AM DEP, blue glass sleep eyes, OM with teeth, partial synthetic wig, BJCB, red dress

235 LOT OF 6 – 2 – HAND CARVED WOODEN GERMAN FIGURES of man & women probably from the 60’s, 2 – corn husk figures 5 ½” of black man & women, & 2 – carved wooden figures 5” of black man & women

236 LOT OF 3 – ARTIST-MADE CARVED WOOD DOLLS, 16” & 15” cage dolls, painted features, & 14 ½” painted features, partial clothing with round metal rod in back

237 LOT OF 4 – MODERN STEIFF MOHAIR ANIMALS, 5 ½” “Basset” dog, 9” “Original Teddy”, 13” brown teddy bear, & 10 gold teddy bear

238 LOT OF 10 BLACK CLOTH DOLLS 7” – 20” various outfits, 2 with early clothing, painted & stitched features, 1 topsey Turvey

239 LOT OF 16 ASSORTED HALF DOLLS, & doll heads, 1 ¼” to 5”, bisque, wax, & porcelain

240 LOT OF 4 – CLOTH/STOCKINETTE DOLLS 13” – 25”, painted features, 2 tea cozies, 1 lady Ravaca, 1 – bisque limbs (broken finger), ethnic outfits

241 2 – 14” TERRA COTA? DOLLS, sculpted hair, painted features, ethnic dress

242 WATERCOLOR ON PAPER 4 ¾” x 6 ½” of young girl holding a basket, signed lower right Maggie Morse?, in early maple & gold leaf frame

243 LOT OF METAL & WOOD DOLL HOUSE FURNITURE, 10 metal Tootsie Toys 9 in white 1 in pink, chairs, range, refrig, sink, etc & 10 pcs of wooden doll house furniture, chairs, table, night stands, couch, etc.

244 13 ASSORTED DOLL HOUSE DOLLS 3 ¾” – 6 ½”, bisque shoulder heads, painted features, mostly dressed

245 14 PCS. OF ASSORTED WOOD DOLL HOUSE FURNITURE, chairs, bed, cupboards, etc.

246 11 PCS OF METAL/TIN DOLL FURNITURE, 2 – 5” tin fireplace fronts, 2 – 6” cast iron couches, 3 CI chairs, 1 – CI ottoman, 2 – CI tables, 1- CI ice box

247 LOT OF 5 CLOTH/STOCKINETTE DOLLS, 10” – 21” in various outfits

248 LOT OF ASSORTED DOLL MINIATURE ACCESSORIES, china, tin ware, baskets, fruit, furniture, etc.

249 LOT OF 6 – 6” COMPO/PLASTER SPRING DRIVEN hand puppets in early outfits & moveable limbs, (as found condition)

250 14” CHALK SNOW WHITE RED/WHITE DRESS, painted features, circa 1940’s (wear), & 2 lots 3”- 4” Snow White & the seven Dwarfs miniatures, marked Walt Disney Japan, painted features (wear) 1 lot missing 1 dwarf & 1 broken arm, with toleware tray

251 LOT OF 10 ASSORTED TRAVEL dolls, 4” – 7”

252 LOT OF 10 ASSORTED TRAVEL dolls 7” – 13”

- 253 LOT OF 8 RAGGEDY ANN & ANDY'S** 11" – 23" with various condition problems
- 254 LOT OF 14 RAGGEDY ANN & ANDY'S** 6" – 20" with various condition problems & 2 – Raggedy Ann & Andy books
- 255 BOX LOT OF ANTIQUE DOLL CLOTHING & cutter pieces**
- 256 LOT OF 16 PCS, 14 PCS OF DOLL HOUSE FURNITURE** with pink & brown fabric, & 2 – tin lamp posts with colored lamp glass
- 257 BOX LOT OF DOLL MINIATURES,** furniture, carriages, etc.
- 258 LOT OF 3 – DOME TOP DOLL TRUNKS,** 14" L with fitted interior, 11" hide & paper covered with orange paper interior, & 18" with top tray (missing bottom to tray)
- 259 16" JUDIE TASCH ARTIST SANTA AUSTIN TEXAS,** carrying a wreath, sticks, fur trim, & burlap bag on wood base, signed
- 260 LOT OF 4 SANTAS, 3 – ARTIST MADE,** 12 ½" Steiff Santa 1933 replica, 18" bent leg wax Santa (thumb break) fur trim outfit, 17" Santa with very long beard for display over a bottle (cardboard cone base), & 15" Paper mache Santa signed Budd on base, painted features
- 261 LOT OF 6 – GENERAL ANTIQUE ITEMS,** tin 12 mold handled candle mold 10 ¾"T, 6 ¾" swing handle clear globe single burner skater lamp, 3 – tin advertising container, lidded decorated coffee container (wear), lidded decorated tea container (wear), Royal Baking Powder container with contents, & Aqua pint Union flask eagle front, clasped hand reverse, applied collar, smooth base
- 262 LOT OF 4 – ARTIST DOLLS 9" – 10" SANTON TYPE** with painted features, appear to be terra cotta heads dressed in Ethnic clothes
- 263 LOT OF 6 CLOTH ARTIST DOLLS,** 3 – 6 ½" – 12" Ravcas painted features, stockinette faces, 19" Sue Chaffee Sizemore black folk art doll, 18" folk art doll Sizemore?, blue stripe dress, & 11" Topsey Turvey (wear & stains to one side)
- 264 LOT OF 7 CLOTH ARTIST DOLLS** 7" – 13" in ethnic outfits
- 265 LOT OF 3 – 6" HITTY ARTIST DOLLS,** painted features, wood, white & floral outfits
- 266 9 ½" EFFANBEE PATSYETTE** compo doll with trunk & clothes
- 267 LOT OF ASSORTED DOLL HOUSE DOLLS & miniature dolls**
- 268 LOT OF ASSORTED DOLL HOUSE DOLLS,** miniatures, small china dolls, etc.
- 269 LOT OF ASSORTED SMALL DOLLS, CORNS HUSK DOLLS,** Kewpie, celluloid dolls, etc.
- 270 BOX LOT OF ANTIQUE DOLL SHOES,** wigs, & hats
- 271 BOX LOT OF ASSORTED SMALLS & miniatures**
- 272 LOT OF 3 BISQUE CHARACTER ARTIST DOLLS,** 6" – 9" in white dresses

- 273 2 – ARTIST DOLLS, 11" CONTINENTAL SOLDIER BY GARY WRIGHT,** molded clay in period outfit with muzzleloader, painted features, on wood base & 16" wood carved lady carrying beer steins, painted features in ethnic outfit
- 274 LOT OF 3, 2 - LARGE CLOTH FACED TEA caddy's,** & 24" cloth doll with stitched features
- 275 LOT OF 4 ARTIST DOLLS,** 3 – 10" Santon peddler figures 2 woman & a man, painted features in ethnic outfits, & a 12" paper mache peddler woman with her wares
- 276 LOT OF 4 – 15" ARTIST FUR COVERED MOOSE** by Stephanie Kapmann, children's book "The Three Bears and other Stories" red soutache child's decorated dress, "George" 24" child's mohair teddy bear
- 277 OPPORTUNITY BOX LOT,** early tea set, small trunk, doll in cradle, etc.
- 278 TIN PAINT DECORATED STORE TEA DISPENSER** 21 ½"T x 12 ½"W x 15"D, lift top with lower pull door, picture of man drinking tea
- 279 2 – BISQUE SHOULDER HEAD DOLLS,** 20 ½" AM Lilly, blue glass eyes, OM with teeth, brown mohair wig, kid body, white dress, & 16" Kestner 145, brown glass sleep eyes, OM with teeth, blonde mohair wig, replaced cloth body
- 280 26" KOPPLESDORF, (NO EYES),** OM, teeth, bwn. mohair wig, BJCB, brown skirt
- 281 2 – K*R 126 SIMON HALBIG** 10" & 16", blue glass sleep eyes, OM wobbly tongue, mohair wigs, compo bodies
- 282 2 – BISQUE DOLLS, 18" AM FLORADORA,** brown glass eyes OM with teeth, brown mohair wig, kid body (no clothes), & 16" 1912, blue glass sleep eyes, OM with teeth, brown mohair wig, BJCB, white dress
- 283 2 – BISQUE SHOULDER HEAD DOLLS,** 11 ½" Heubach 275, blue glass eyes, OM with teeth, red mohair wig, kid body, yellow dress, & 12 ½" Germany Mabel, brown glass sleep eyes, OM with teeth, blonde mohair wig, kid body (new), white dress
- 284 LOT OF 3 CLOTH DOLLS,** 7" "Brownie" painted cloth, 10" painted cloth "Stella" by Susan Fosnot UFDC 2015, 23" painted cloth in yellow/blue stripe dress
- 285 2 – BISQUE HEAD DOLLS,** 9 ½" 125, blue glass eyes, OM with teeth, cardboard body, white knit dress, & 19" H Germany shoulder head, brown glass eyes, OM with teeth, brown mohair wig, kid body, white dress
- 286 LOT OF 4 – 2 – 11 ½" CAMPBELL'S KID** A Horsman Doll, boy & girl, original tags, original outfits, & 2 – 11" modern vinyl Campbell kids
- 287 LOT OF 3 CLOTH DOLLS,** 15" Roxanna Cole, painted features, white dress, 11" Topsey Turvey in red dress, & 11" cloth baby, painted features, floral dress
- 288 2 – UFDC CONVENTION DOLLS,** Atlanta 2001 "Starry Starry Night" by Goldie Wilson limited edition of 150, & Chicago 2000 "Fin Du Millenaire Lucy Fitch Perkins
- 289 8" KATHY HANSON FRENCH FASHION** artist doll with trunk & accessories
- 290 2 – PAPER MACHE SHOULDER HEAD DOLLS,** 12" & 15", painted features, blonde molded hair, cloth bodies, leather arms, early outfits (wear & damage)
- 291 LOT OF 5 CLOTH DOLLS,** 2 – Norah Wellings, painted features 7 ½" & 9 ½", 13 ½" Farnells Alpha toy soldier in felt, & Lovingly dolls, 9 ½" & 14" "Bernie & Louis) with framed picture signed by Jane Withers
- 292 LOT OF 8 FLAT FACE WOODEN DOLLS,** painted features, mortise & tenon moveable joints, vintage clothing (circular stamp on backs with a horse??)

- 293 3 – BING CLOTH DOLLS, 8” BOY & 2 – 10” girls, pressed cloth, painted features, mohair wigs, traditional dress**
- 294 LOT OF 3 ARTIST DOLLS, 10” “Laura” by Paulie Bjonness-Jacobsen 395/3000, 10” “Tansie Comes to Visit” by Patricia Coffey, & 2001 UFDC “Bleurette’s Bebe” by Anjulie Renee UFDC Luncheon 2001 Atlanta, all MIB**
- 295 LOT OF 2 UFDC CONVENTION DOLLS, Tyler Wentworth Collection Robert Tonner doll & accessories, Lisette doll in small canvas lift top trunk with clothes**
- 296 BOX LOT OF DOLL HOUSE miniature furniture**
- 297 BOX LOT OF DOLL HOUSE MINIATURE furniture, accessories, & dolls**
- 298 BOX LOT OF DOLL HOUSE miniature furniture & accessories**
- 299 BOX LOT OF DOLL HOUSE MINIATURE furniture & accessories**
- 300 LOT OF 16 FRAMED & UNFRAMED prints & pictures of dolls & doll related items**
- 301 LOT OF 6 WINNIE THE POOH CHARACTERS by Maude & John Blackburn for Canterbury Bears, limited editions, Eyore 166/200, Tigger 63/200, Kanga & Roo 63/200, Pooh 63/200, Piglet 166/200, & Rabbit 166/200 for Walt Disney World 1996 & 1997**
- 302 BOX LOT OF DOLL CLOTHES, fabrics, whites, etc.**
- 303 2 – MODERN KATHE KRUSE DOLLS, 13” & 15” with assorted clothing**
- 304 LOT OF 5 STOCKINETTE FACE ARTIST DOLLS, Ravaca, Kimport, and 3 others 9” – 13”**
- 305 BOX LOT OF 11 MODERN dolls**
- 306 BOX LOT OF ASSORTED MODERN & artist dolls**
- 307 BOX LOT OF 18 SMALL DOLLS, doll house dolls, etc.**
- 308 BOX LOT OF 13 SMALL assorted dolls, etc.**
- 309 LOT OF 6 ASSORTED cloth dolls**
- 310 LOT OF 2 KATHE KRUSE 5” doll house dolls, & 4 – Steiff animals, 4” brown Teddy, Mungo, hedgehog, 7” blonde teddy.**
- 311 LOT OF 7 NATIVE INDIAN & ESKIMO DOLLS 3” – 10” in original outfits**
- 312 LOT OF 5 MODERN PEG WOODEN dolls, 5 ½” 10 ½”, 2 dressed**

- 313 3 – SMALL BISQUE HEAD DOLLS, 7 ½” K*R 401, brown glass sleep eyes, OM with teeth, blonde mohair wig, walking compo body, 8 ½” 44-18, blue glass eyes, OM with teeth, brown mohair wig, compo body, & 8 ½” SFBJ, brown glass eyes, CM, brown mohair wig, compo body (all 3 dolls have some kind of problems)**
- 314 LOT OF 3 CLOTH DOLLS, 2 – Nora Wellings, cloth doll in pink dress**
- 315 REPRODUCTION BLUETTE IN KIT form with trunks & clothes**
- 316 10 ½” KATHE KRUSE “PUPPE”, painted features, dressed in lederhosen, along with a 10 ½” Kathe Kruse blue paint decorated 4 wheel carriage**
- 317 LOT OF 6 ASSORTED MODERN DOLLS, 10” – 14 ½”**
- 318 2 – MADAME ALEXANDER COMPO DIONNE QUINT dolls, framed DQ picture, & 4 – Japan knockoff DQ dolls**
- 319 LOT OF 2 - ARTIST DOLLS, “CHRISTMAS AT MOUNT VERNON” 3” George Washington doll & printed backdrop for The Letitika Penn Doll Club, MIB, & 9” all bisque doll “Alice” by Kathy Redmond for the 1990 UFDC Convention**
- 320 LOT OF 3 – ARTIST DOLLS, 9” “PRINCESS SARA” UFDC 2009 by Heidi Plusczok, 6 ½” china head by Rosemary Synder for UFDC Luncheon, & 4” Mignonette in knitted dress with tiny doll**
- 321 LOT OF 3 – ARTIST DOLLS, 14 ½” Rohmer, painted features, plastic body, 7 ½” blonde hair parian type, & 11” blonde hair parian type**
- 322 LOT OF 4 – ARTIST DOLLS & accessories**
- 323 LOT OF 5 – SMALL DOLLS 3 ½” – 6 ½”, 2 – all bisque, 3 – bisque head with compo bodies**
- 324 LOT OF 3 – 8 ½” PEGGY NISBET “The doorman at Harrods”, in orig. box, 9 ½” Liberty of London scholar doll, period dress, & 10” German compo doll (repair to back of neck)**
- 325 “DAISY’S DOLL HOUSE” BY DONELLE DENERY 39/750 bungalow doll house kit**
- 326 2 – BISQUE DOLLS, 25” BISQUE SHOULDER HEAD “M” KESTNER, blue glass sleep eyes, OM with teeth, PE, blonde mohair wig, kid body, bisque arms (missing index finger right hand), black dress with cameo & parasol, (very worn), & 8”JDK 257 character baby, blue glass sleep eyes, OM with teeth, brown mohair wig, compo body (cracks), white dress**
- 327 LOT OF 2 – LARGE BOX LOT OF ASSORTED TRIMS, & 10” Glass dome with miniature writing desk, chair, & accessories**
- 328 LOT OF 3 – PEDDLER DOLLS, 12” black hair china, 11” peg wooden, & 8” artist doll, all with their wares**
- 329 2 – BISQUE DOLLS, 13” German shoulder head, blue glass sleep eyes, OM with teeth, blonde mohair wig, kid body, white apron, & 13 ½” AM 3200 shoulder head, blue glass eyes, OM with teeth, blonde mohair wig, kid body (repairs), white dress**
- 330 2 – BISQUE DOLLS, 10” GERMAN D5, blue glass eyes, OM with teeth, blonde mohair wig, compo body, floral dress, & 14” Halbig K*R 39, blue glass eyes, OM with teeth, brown mohair wig, BJCB, blue/white dress**
- 331 LOT OF 4 – MODERN ARTIST PEDDLER DOLLS 7” – 10”, wood, wax, compo, bisque, with their wares**
- 332 LOT OF 3 – 10 ½” ARTIST DOLLS, 2 – stockinette face, 1 – bisque, vintage clothes**

- 333 2 – SHOULDER HEAD DOLLS**, 13” Parian, painted features, sculpted blonde hair, cloth body, bisque arms & legs, blue stripe dress & 10 ½” bisque, painted features, sculpted blonde hair, cloth body, bisque arms & legs, Shaker dress & bonnet
- 334 LOT OF 3 – COMPO DOLLS, 11” EFFANBEE**, original outfit (right wrist rubs from bracelet), 14” all original, & 16” Ideal all original
- 335 STEIFF LIMITED EDITION 4 MOHAIR BEARS** & tea party in original box
- 336 LOT OF ASSORTED BLACK ARTIST** dolls
- 337 LOT OF ASSORTED BLACK ARTIST DOLLS** & black artist cloth dolls
- 338 LOT OF 6 ARTIST DOLLS**, 5 ½” – 11” 4 – signed Sylvia Vance
- 339 LOT OF 7 ARTIST DOLLS**, 5” – 13”
- 340 BOX LOT OF ASSORTED VINTAGE** doll clothes
- 341 LOT OF ASSORTED VINTAGE** children’s clothing
- 342 8 – 8” PORCELAIN ELKE HUTCHENS ARTIST SHIRLEY TEMPLE** dolls with various expressions, painted features, Danbury Mint Shirley Temple Movie Memories Doll Collection with white shelf
- 343 LOT OF 4 BLACK CLOTH DOLLS** 8” -13” stitched features
- 344 BOX LOT OF 12 ASSORTED** small mohair bears, various colors
- 345 LARGE LOT OF ASSORTED SMALL DOLLS** of varying composition
- 346 LOT OF 6 WINDUP ANIMAL** toys & tin car
- 347 LOT OF 3 – SYLVETTE AMY FRENCH SANTON** dolls, 2 – 8”, 1 – 10”, hand decorated & painted clay on signed wooden bases, native outfits, original labels
- 348 LOT OF LITTLE ORPHAN ANNIE ITEMS**, toy stove, coffee cup, Ovaltine cup, figures, & lot of miniature furniture & tin stoves
- 349 LOT OF 4 – FELT DOLLS**, 17”, 18”, 14”, & 12”, painted features, 2 – Lenci’s, 1 – Marqis Roma, all with soil & wear
- 350 LOT OF 16 - 2” – 5”** all bisque & bisque head dolls

- 350.01 LOT OF 6 SMALL BISQUE HEAD DOLLS** 5” – 9”, assorted outfits
- 350.02 BOX LOT OF ANTIQUE & modern** doll shoes
- 350.03 BOX LOT OF ASSORTED GLASS** miniatures & animal miniatures
- 350.04 3 DOLLS** – 10” Liberty of London doll, King George VI, Beefeater guard, etc. (slightly soiled)
- 350.05 2 – CHINA HEAD DOLLS**, 15” black paint dome head, painted features, brown mohair wig, cloth body, china limbs, black dress, & 16” center part black hair, painted features, cloth body, china limbs, white/blue dress
- 350.06 BOX LOT OF ASSORTED 12 HATS**, many straw hats
- 350.07 3 – WAX DOLLS**, 8” wax head with brown pupiless glass eyes, cloth body with wood limbs, white dress, 5” baby in cradle under dome, & 7” recliner on pin cushion
- 350.08 3 – WAX DOLLS, 11”** with brown pupiless glass eyes, sculpted hair, cloth body with wood limbs, plaid pants, 8 ½” wax half doll on stand, black dress (melting), & 13” wax with blue glass eyes, brown mohair wig, cloth body, compo limbs
- 350.09 LOT OF 4 DOLLS**, 16” 3 face Oriental in ethnic costume, 10” American Character doll compo & vinyl (leg damage), 9 ½” Vogue Jill red outfit, & 10 ½” R&B hard plastic blue felt dress
- 350.10 LARGE LOT OF SMALLS** & miniatures
- 350.11 LOT OF 5 – 12” STEIFF GRAY TERRIER SWIVEL HEAD**, German dog tin pull cart 11” L, Schoenhut elephant, small cat in basket, & English Chiltern Hygenic dog pull toy
- 350.12 2 – KATHE KRUSE DOLLS MIB**, 10” Annemere & 10” “When I grow up” 2008 UFDC convention doll
- 350.13 LOT OF 7 JAPANESE DOLLS** 3 ½” – 7” ethnic costumes
- 350.14 LOT OF 18 1 ¼” – 6” ASSORTED CHINA** & porcelain miniatures in various poses & forms
- 350.15 2 – SUITCASES WITH VOGUE GINNY CLOTHES**, 4 Vogue Ginny dolls & wardrobe (as is), Uneda teen Revlon type doll & clothes
- 350.16 LOT OF 5 MICKEY & MINNIE MOUSE** items, 3 ½” ceramic drummer with Hong Kong label, 2 – 3 ½” Fun-E-Flex figures Mickey & Minney with label, 2” ceramic Mickey, & 3” plastic Mickey pushing roller Made in Hong Kong
- 350.17 LOT OF 4 JAPANESE DOLLS** 8” – 9” ethnic costumes
- 350.18 LOT OF 4 ITEMS** – 7” cloth Brownie doll, 6 ½” clay pipe doll with thread spool base, 6” sheep pull toy on steel wheels, & 7” Billiken book end with company coin
- 350.19 3 – MOHAIR BEARS**, 16” English musical bear (worn), 16” blonde bear, & 5” Boyds Bear
- 350.20 BOX LOT OF ASSORTED DOLL MINIATURES** & metal items

- 350.21** 2 – **BLACK DOLLS, 7” BISQUE**, brown glass eyes, CM, black mohair wig, jointed compo body, red floral dress, & 10 ½” artist, molded painted features, cloth body, holding 2 white babies
- 350.22** **LOT OF GLASS ITEMS, 5 – MINIATURE GERMAN BLOWN** glass reindeer Christmas ornaments 3 ½” – 5” tall, & lot of glass doll house miniatures
- 350.23** **BOX LOT OF ASSORTED SMALL BISQUE/CHINA** dolls & figures 1 ½” – 3 ½”
- 350.24** **LOT - 6 SMALL BISQUE DOLLS 3” – 5 ½”**, soldier, baby, candy container, etc.
- 350.25** **LOT OF ASST. DOLL RELATED ITEMS**, oval table, carriage, parasols, coat, sign, etc.
- 350.26** **LOT OF 4 – ½ DOLL IN CHAIR, NOVELTY DOLL IN CHAIR**, Louis Nichole bed in box, & 7 ½” Vitrene
- 350.27** 3 – **ARTIST DOLLS**, 11” Vivian Leigh by Ann Parker, 5 ½” porcelain repro with accessories & box, & 14” Bru Jne by Jan repro
- 350.28** 1- **8 ½’ BISQUE HEAD AU NAIN BLEU VERLIN GIRL**, & 5 – Vintage cloth wrapped armature dolls in various poses
- 350.29** **LOT OF 3 – 15 ½”** mask face doll, painted features, cloth body, 19” hard plastic shoulder head, painted features, (peeling), & 20” “Sweet Alice” American Character Doll
- 350.30** 2 – **BISQUE DOLLS, 17” FULPER** shoulder head bride, blue glass eyes, OM with teeth, cloth body, & 21” Alma S/H, brown glass sleep eyes, OM with teeth, kid body, blue/red dress
- 350.31** **LOT OF 4 DOLLS, 8” BLONDE HAIR PARIAN**, painted features, cloth body, early dress, 6” blonde hair parian, painted features, 2 – 6 ½” all bisque, painted features, ethnic dress
- 350.32** **LOT OF 3 DOLLS – 11” BISQUE SHOULDER HEAD**, blue glass sleep eyes, OM with teeth, blonde mohair wig, cloth body, ethnic dress, 11” peg wooden, painted features, early dress, & 6 ½” peg wooden, painted features, early dress
- 350.33** **LOT OF 3 – 8” BISQUE FLORADORA**, brown glass sleep eyes, OM with teeth, blonde mohair wig, BJCB, blue check dress, 8” bisque head (as is), & modern blonde hair china kit
- 350.34** 2 – **BISQUE DOLLS, 15” AM SHOULDER HEAD**, brown glass sleep eyes, OM with teeth, blonde mohair wig, jointed cloth body, brown wool skirt, & 16” AM 3200, blue glass eyes, OM with teeth, brown mohair wig, kid body, red dress, on roller skates
- 350.35** 2 – **BISQUE DOLLS, 16” GERMAN C 0**, blue glass sleep eyes, OM with teeth, brown mohair wig, BJCB, white dress, & 17” 154 shoulder head, blue glass sleep eyes, OM with teeth, blonde mohair wig, kid body, white dress
- 350.36** 3 – **BLONDE HAIR CHINAS/PARIAN**, 16” china painted features, cloth body with china limbs, white/black dress, 19” china painted features, cloth body with leather arms, white dress, & 12” parian painted features, cloth body, green dress
- 350.37** **LOT OF 2 – 17” BISQUE SHOULDER HEAD “MAJESTIC”**, blue glass eyes, OM with teeth, red mohair wig, kid body, red dress, 18” paper mache, brown pupiless eyes, black painted hair under mohair wig, cloth body with leather arms, blue dress (melting)
- 350.38** **LOT OF 4 – 8” GERMAN SHELL PEDDLER ARTIST DOLL**, painted features, with bucket of shells & net, 3 – small all bisque/china dolls 3 ½” – 5”
- 350.39** **LOT OF 4 – CHINESE DOLLS**, 1 – 11” Paper mache, brown glass pupiless eyes, cloth body, long black braided hair ethnic outfit (melting), 3 – 10 ½” Chinese men on wood bases, ethnic
- 350.40** **LOT OF 5 ASSORTED CHINESE DOLLS** 10” – 12”, paper mache, & cloth, ethnic
- 350.41** **68” CHASE NURSE TRAINING DOLL**, painted features (touchups), jointed limbs, made by the Chase doll company Pawtucket RI, (missing ears)

The End of Non-Pictured Dolls Time for the EXTRAS

*** EXTRAS ***

- E001 LOT OF 2 - MADAME ALEXANDER “SCARLET” STYLE 2240 & MADAME ALEXANDER “MELANIE” STYLE 2220 IN ORIGINAL BOXES**
- E002 LOT OF 3 – 16” LA CHERI SEKIGUCHI ARTIST DOLLS IN ORIGINAL BOXES, MINT CONDITION**
- E003 LOT OF 4 – 15” SALA & BERG SEKIGUCHI ARTIST DOLLS IN ORIGINAL BOXES, MINT CONDITION**
- E004 LOT OF 2 – DOLLS, 1 – HORSEMAN 1922 VINYL IN ORIGINAL BOX, & 19” GENERAL MACARTHUR IN UNIFORM (NEEDS STRINGING)**
- E005 LOT OF 4 – MODERN DOLLS, 2 – SNOW WHITES**
- E006 LOT OF 4 DOLLS, 3 – HARD PLASTIC, & 1 – COMPO SHIRLEY TEMPLE**
- E007 LOT OF 2 DOLLS, 18 IDEAL COMPO & RUBBER DOLL, & 14 ½” COMPO & HARD PLASTIC DOLL**
- E008 LOT OF 7 ASSORTED DOLLS OF VARIOUS MATERIALS**
- E009 LOT OF 5 ASSORTED DOLLS, AM 390, KEWPIE, 2 – ARTIST DOLLS, & COMPO**
- E010 OPPORTUNITY BOX LOT, GLASS DOME, DOLL TEA SET, ROOM BOX, DOLL CLOTHES, BASKET, ETC.**
- E011 LARGE LOT OF ASSORTED DOLL CLOTHES, HATS, FABRIC, ETC.**
- E012 BOX LOT OF SEWING ITEMS, LACE, RIBBON, ETC.**
- E013 BOX LOT OF FABRIC & CUTTER PIECES**
- E014 BOX LOT OF FABRIC & CUTTER PIECES**
- E015 BOX LOT OF ASSORTED WIGS**
- E016 BOX LOT OF DOLL HOUSE DOLLS (AS IS)**
- E017 BOX LOT OF DOLL PARTS**
- E018 BOX LOT OF FABRIC & CUTTER FABRIC, ETC.**
- E019 BOX LOT OF FABRIC & CUTTER FABRIC, ETC.**
- E020 BOX LOT OF ASSORTED DOLL CLOTHES**
- E021 BOX LOT OF ASSORTED DOLL CLOTHES**
- E022 LOT OF 2 DOLL CHAIRS, LADIES HATS, ETC.**
- E023 LOT OF 3 SMALL LIFT TOP DOLL TRUNKS**
- E024 LOT OF 4 CLOTH CABBAGE PATCH KIDS**
- E025 LOT OF 3 COMPOSITION DOLLS**

- E026 BOX LOT OF ASSORTED MISC. DOLL RELATED SMALLS
- E027 BOX LOT OF ASSORTED MISC. DOLL RELATED SMALLS
- E028 LOT OF 7 MODERN DOLLS IN ORIGINAL BOXES
- E029 LOT OF 5 MODERN DOLLS IN ORIGINAL BOXES
- E030 LOT OF 7 MODERN BARBIE'S IN ORIGINAL BOXES
- E031 LOT OF 7 MODERN DOLLS IN ORIGINAL BOXES
- E032 LOT OF 6 MODERN DOLLS IN ORIGINAL BOXES
- E033 LOT OF 6 MODERN DOLLS IN ORIGINAL BOXES
- E034 LOT OF MISC. MODERN DOLLS & ACCESSORIES
- E035 LOT OF 4 – BOX LOT OF ASSORTED DOLL CLOTHES OF VARIOUS AGES,
& 3 MODERN DOLLS
- E036 15" STEIFF "KLEIN ARCHIE" BROWN MOHAIR BEAR (ED1083/2500)
- E037 2 – CHARLIE MCCARTHY DOLLS 12 ½" & 23" PULL STRINGS NOT
WORKING
- E038 BOX LOT OF DOLL REFERENCE BOOKS
- E039 BOX LOT OF DOLL REFERENCE BOOKS
- E040 BOX LOT OF PLASTIC & CELLULOID DOLLS
- E041 BOX LOT OF ASSORTED MODERN PLASTIC DOLLS
- E042 LARGE LOT OF MODERN DOLLS & ACCESSORIES
- E043 BOX LOT OF ASSORTED SMALL DOLLS & ACCESSORIES
- E044 LOT OF 5 MODERN DOLLS
- E045 LOT OF 9 PCS OF DOLL FURNITURE
- E046 PAPER LOT, COMIC BOOKS, US STAMPS, CHILDREN'S BOOKS, PAPER
DOLLS, ETC.
- E047 LOT OF 8 MODERN GOLLYWOGS
- E048 LARGE BOX LOT OF DOLL MINIATURES & ACCESSORIES
- E049 TRAY LOT OF DOLL SMALLS, DOLLS, ETC.
- E050 LOT OF 4 MODERN DOLLS
- E051 BOX LOT OF ASSORTED WIGS

***** The End of the Auction *****

All of us at Withington's would like to express our sincere thanks to all of you for sharing in the celebration of Iva Marie Rideout's life with the dolls. The Doll World will never be the same without her. Follow us on facebook or visit our WEB-site: www.withingtonauction.com for upcoming auctions .

Have a Happy & Healthy holiday season - see you next year!

May all your Doll Dreams come true!

Withington Auction, Inc. - October 21, 2021

There will be no Inspections of dolls / lots after the auction begins



The Iva Marie Rideout Doll Collection
Presented by Withington Auction

